

# Circle the correct word: heavy or light



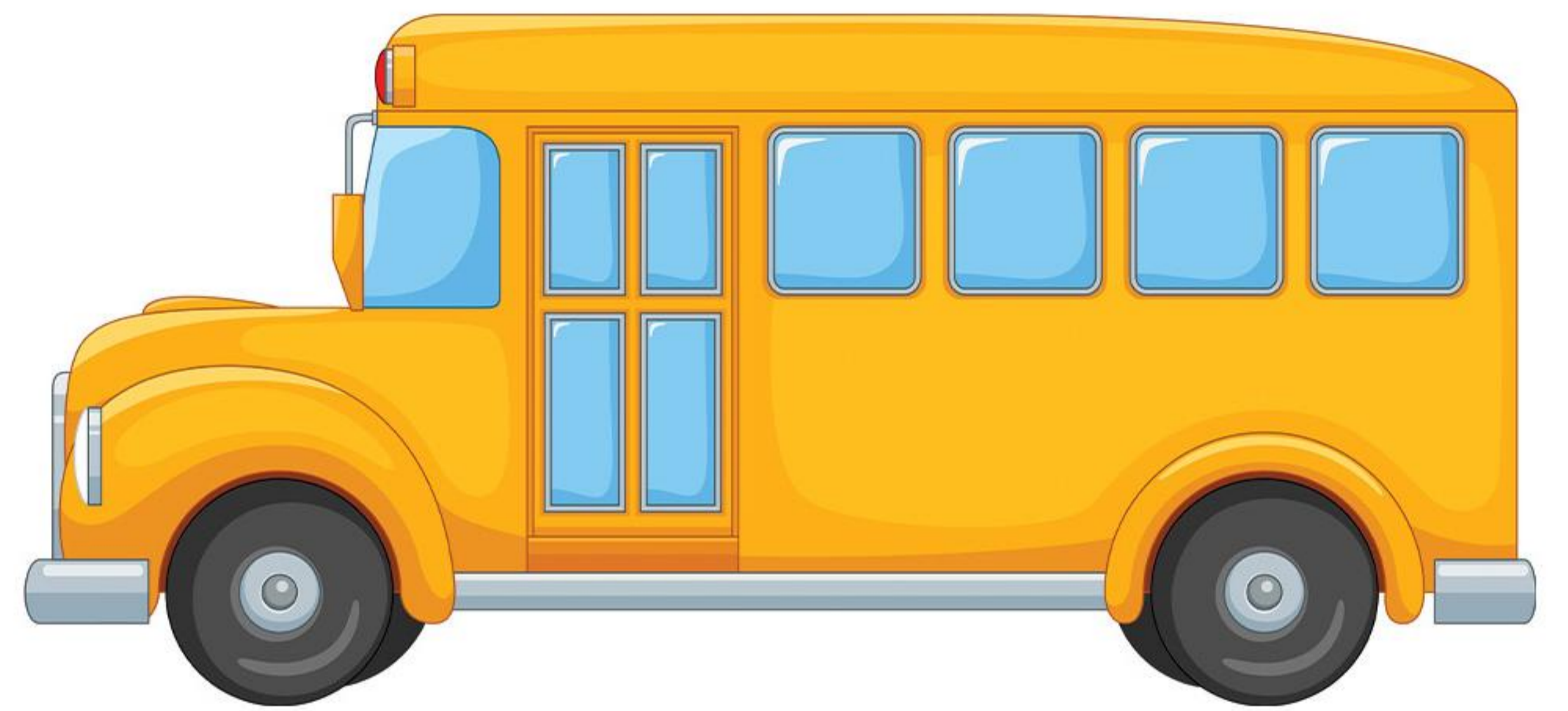
The ball is Heavy / Light



The kite is Heavy / Light



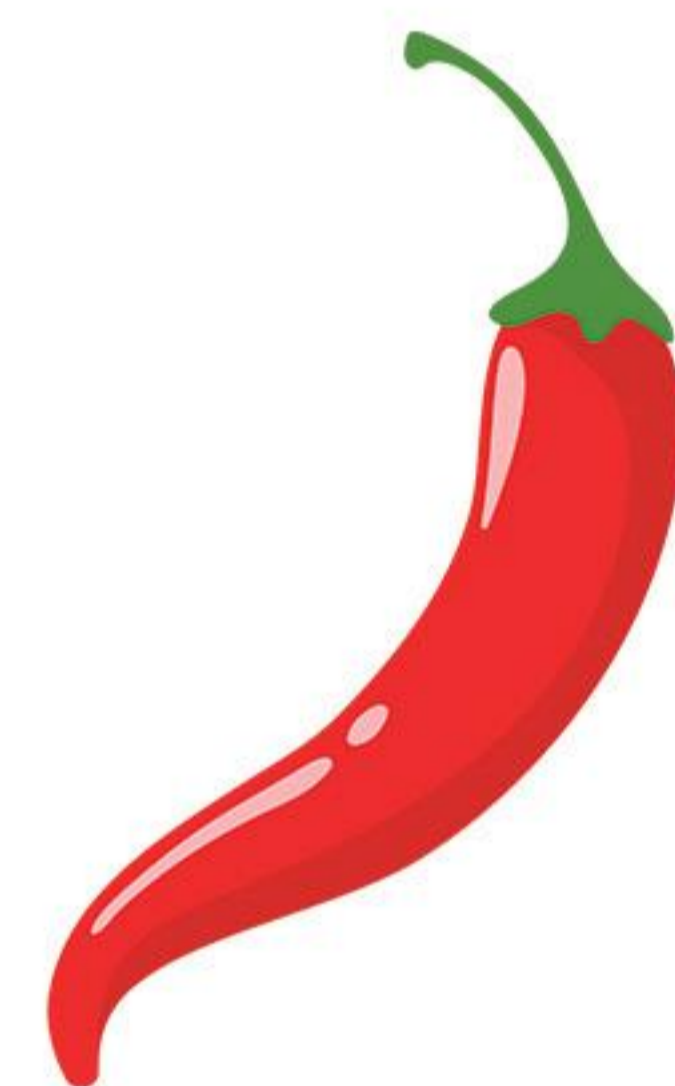
The bicycle is Light / Heavy



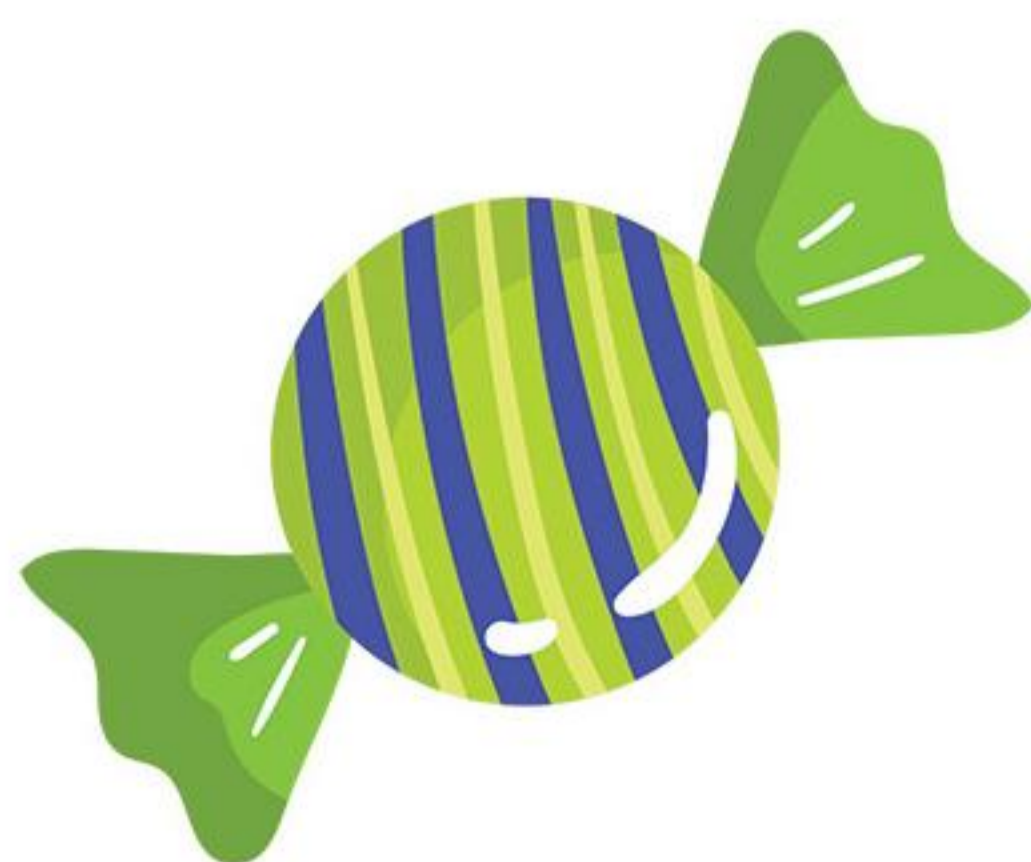
The bus is Light / Heavy



The cauliflower is Light / Heavy



The chilli is Heavy / Light



The candy is Heavy / Light

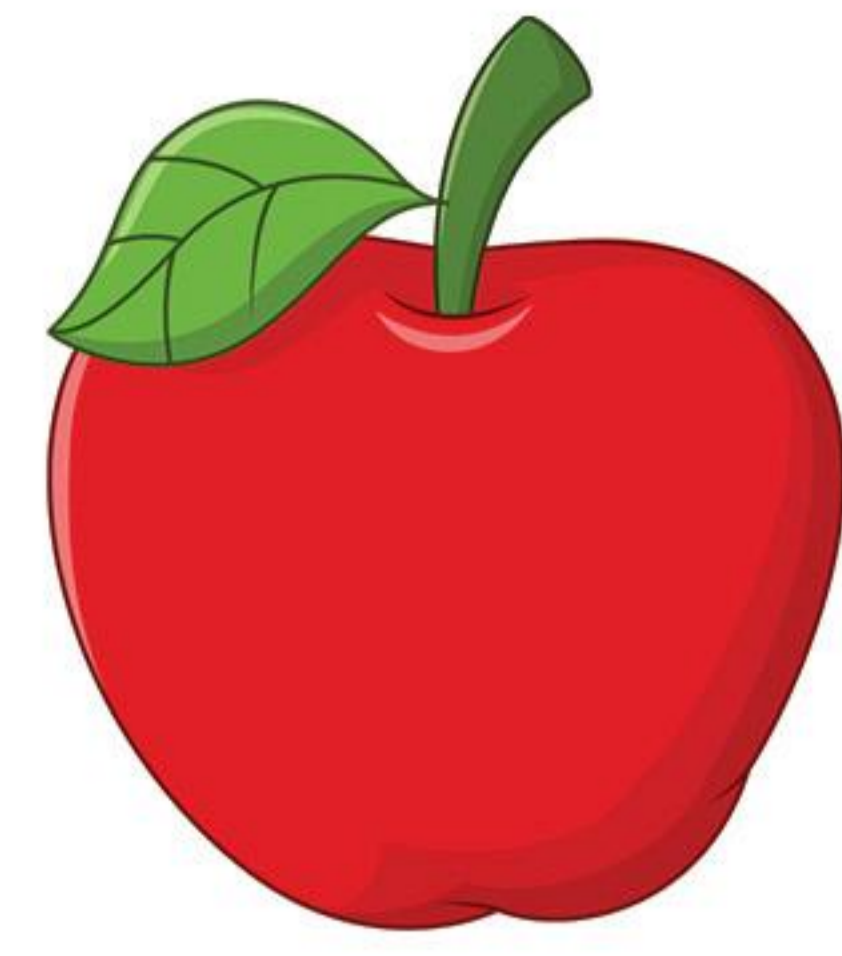


The cake is Light / Heavy

# Circle the correct word: heavy or light



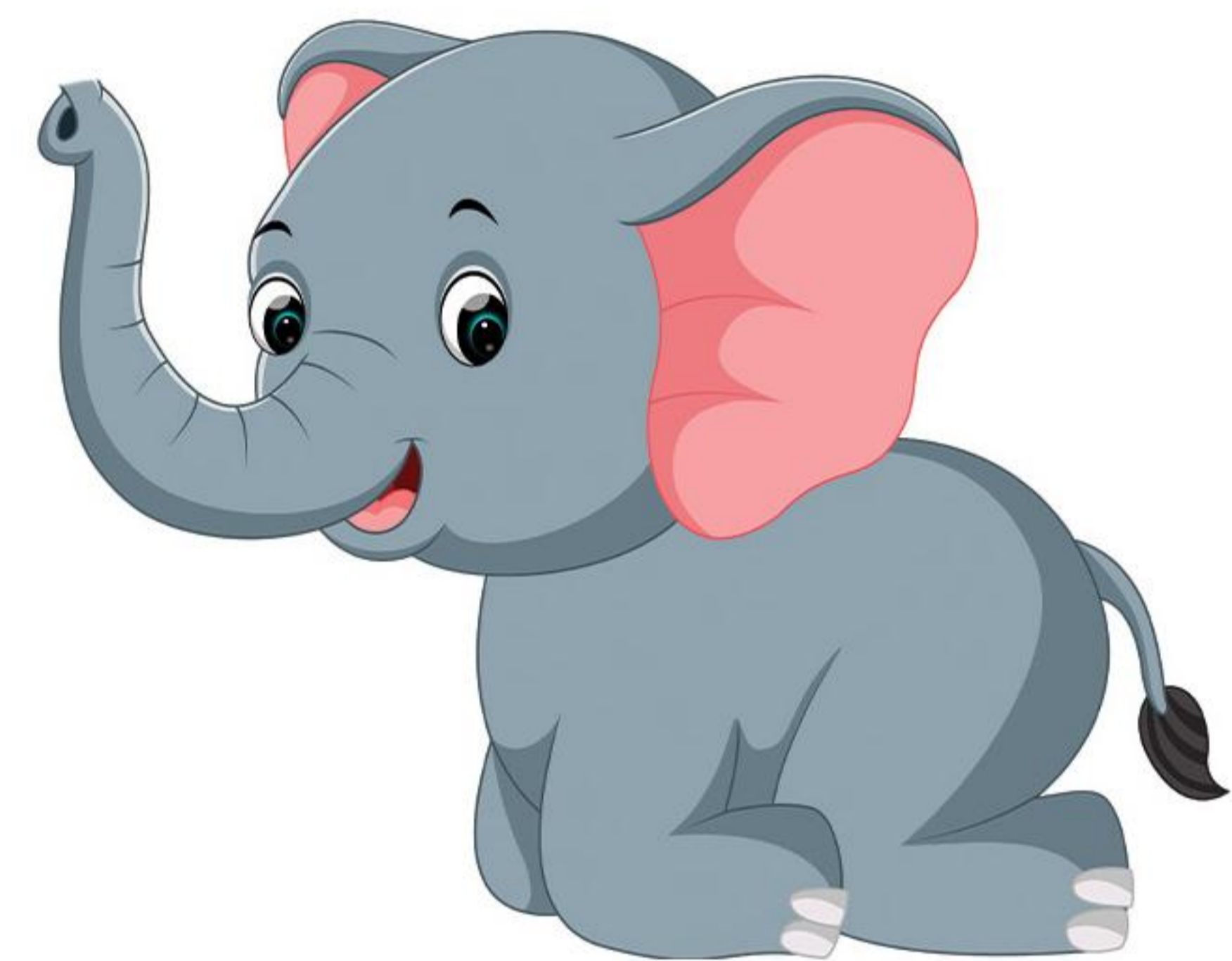
The pumpkin is Heavy / Light



The apple is Heavy / Light



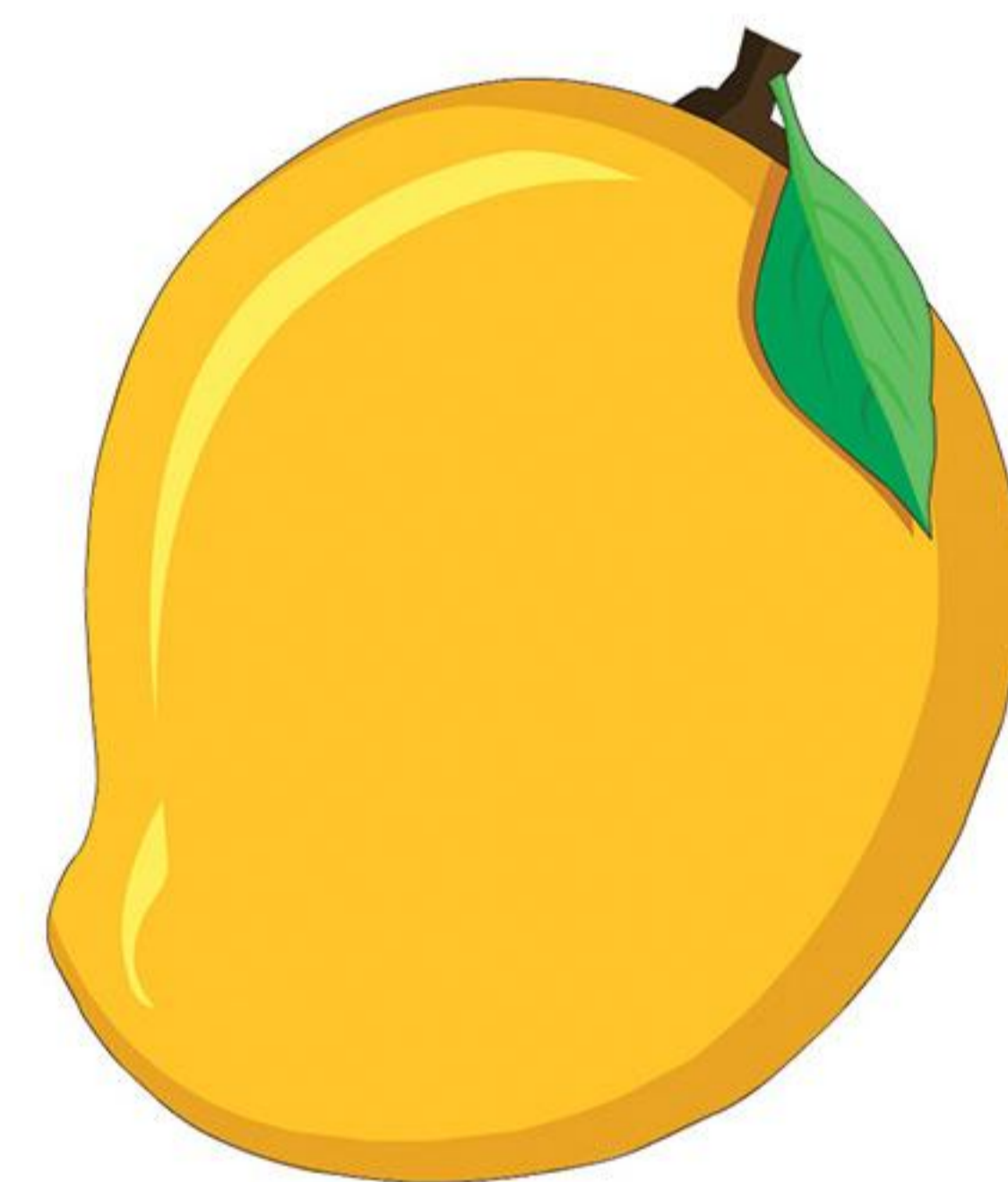
The duck is Light / Heavy



The elephant is Light / Heavy



The leaf is Light / Heavy



The mango is Heavy / Light

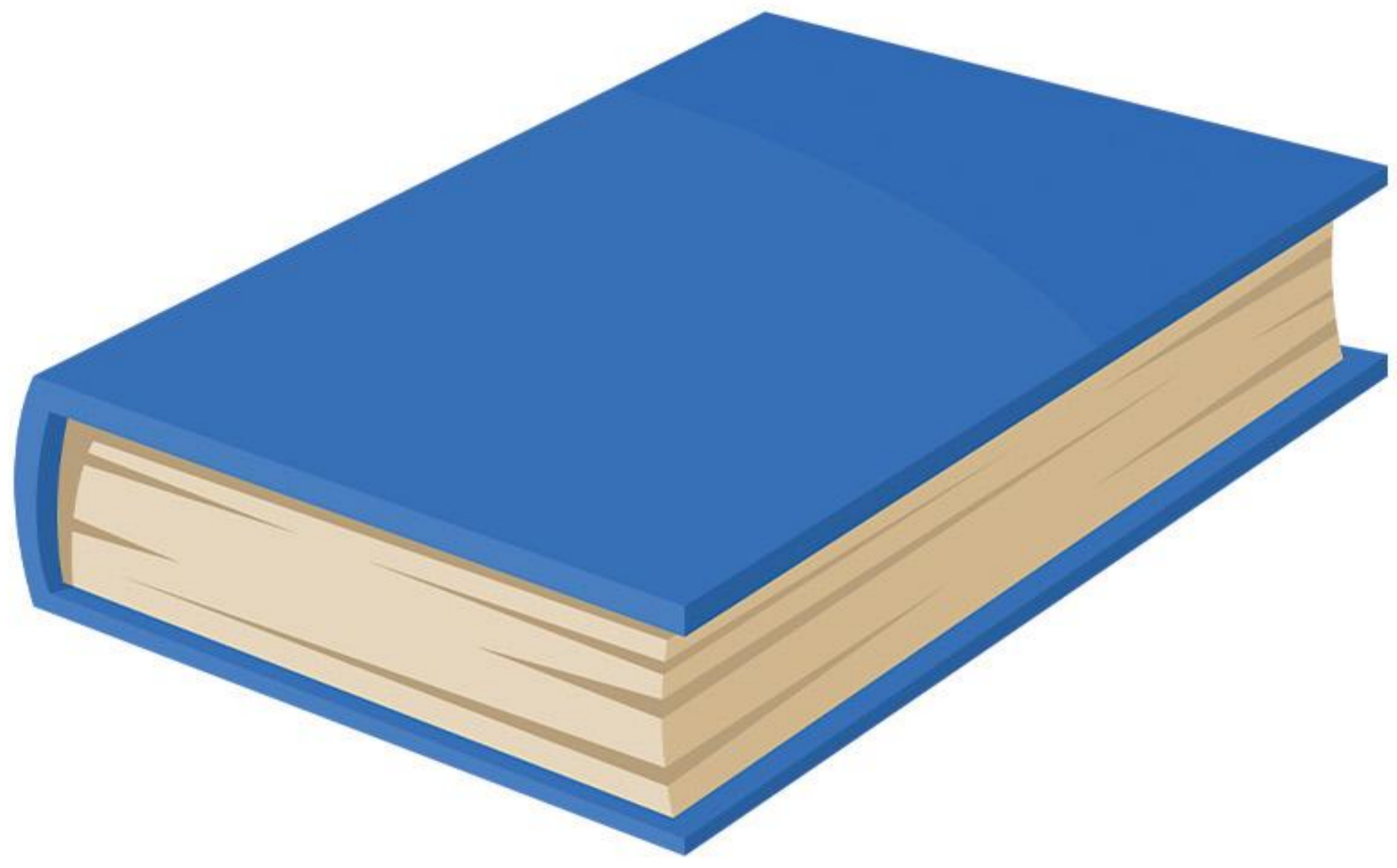


The drum is Heavy / Light

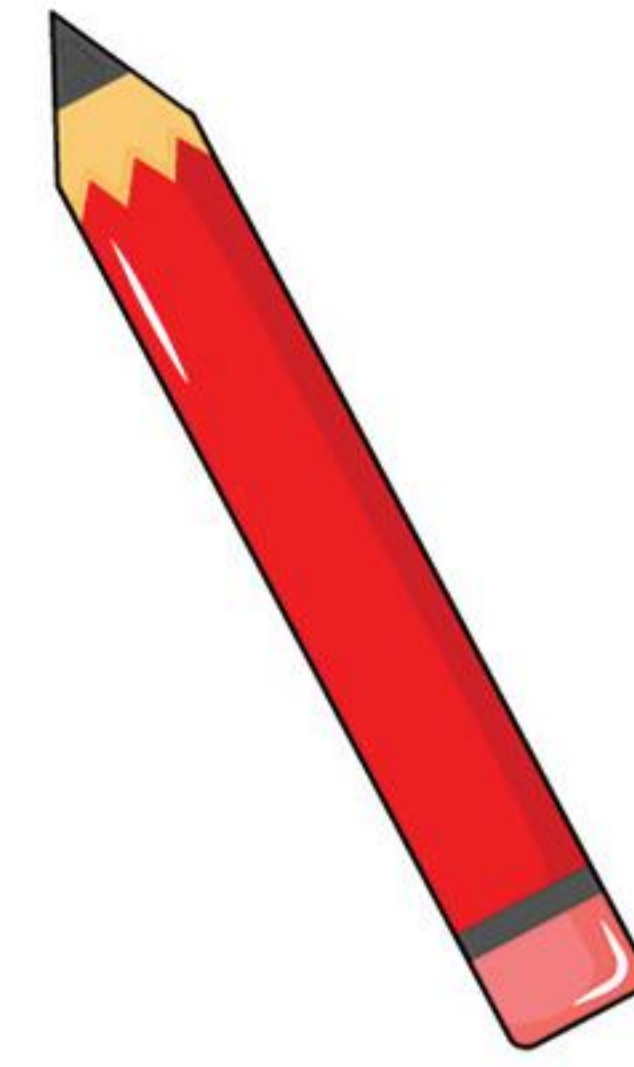


The balloon is Light / Heavy

# Circle the correct word: heavy or light



The book is Heavy / Light



The pencil is Heavy / Light



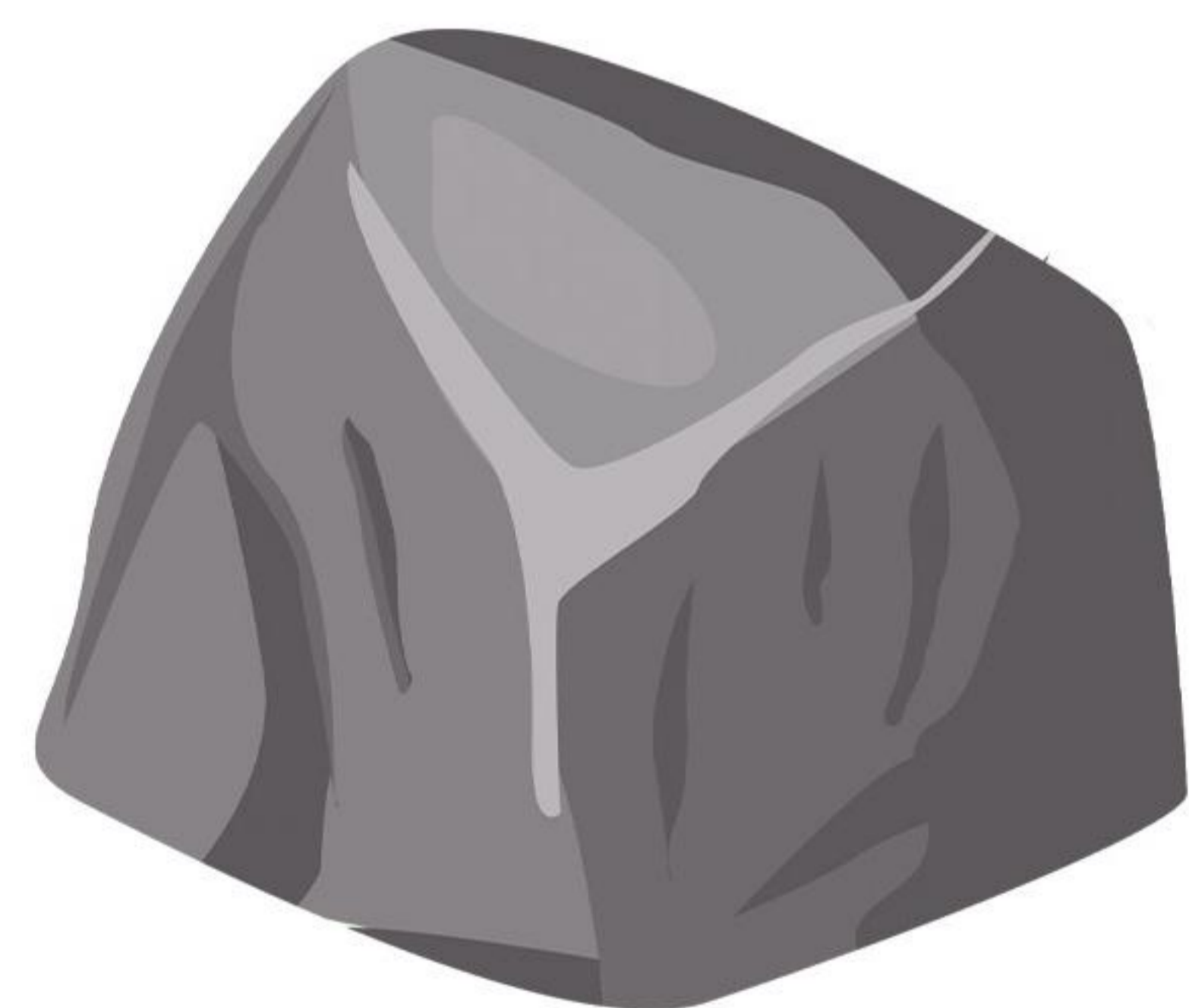
The stool is Light / Heavy



The bed is Light / Heavy



The bottle is Light / Heavy



The stone is Heavy / Light



The ball is Heavy / Light



The rose is Light / Heavy

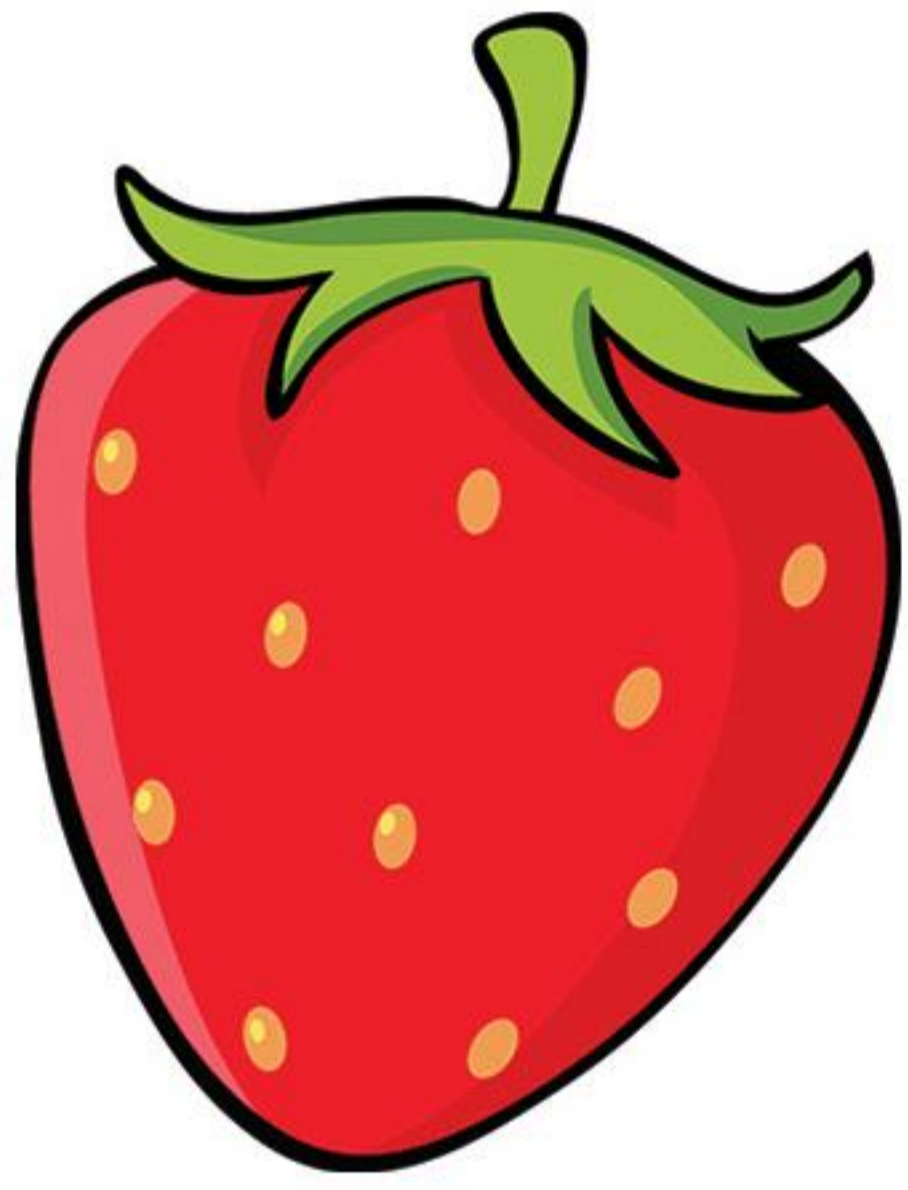
**Circle the correct word: heavy or light**



The log is Heavy / Light



The flag is Heavy / Light



The strawberry is Light / Heavy



The watermelon is Light / Heavy



The wok is Light / Heavy



The spoon is Heavy / Light



The umbrella is Heavy / Light



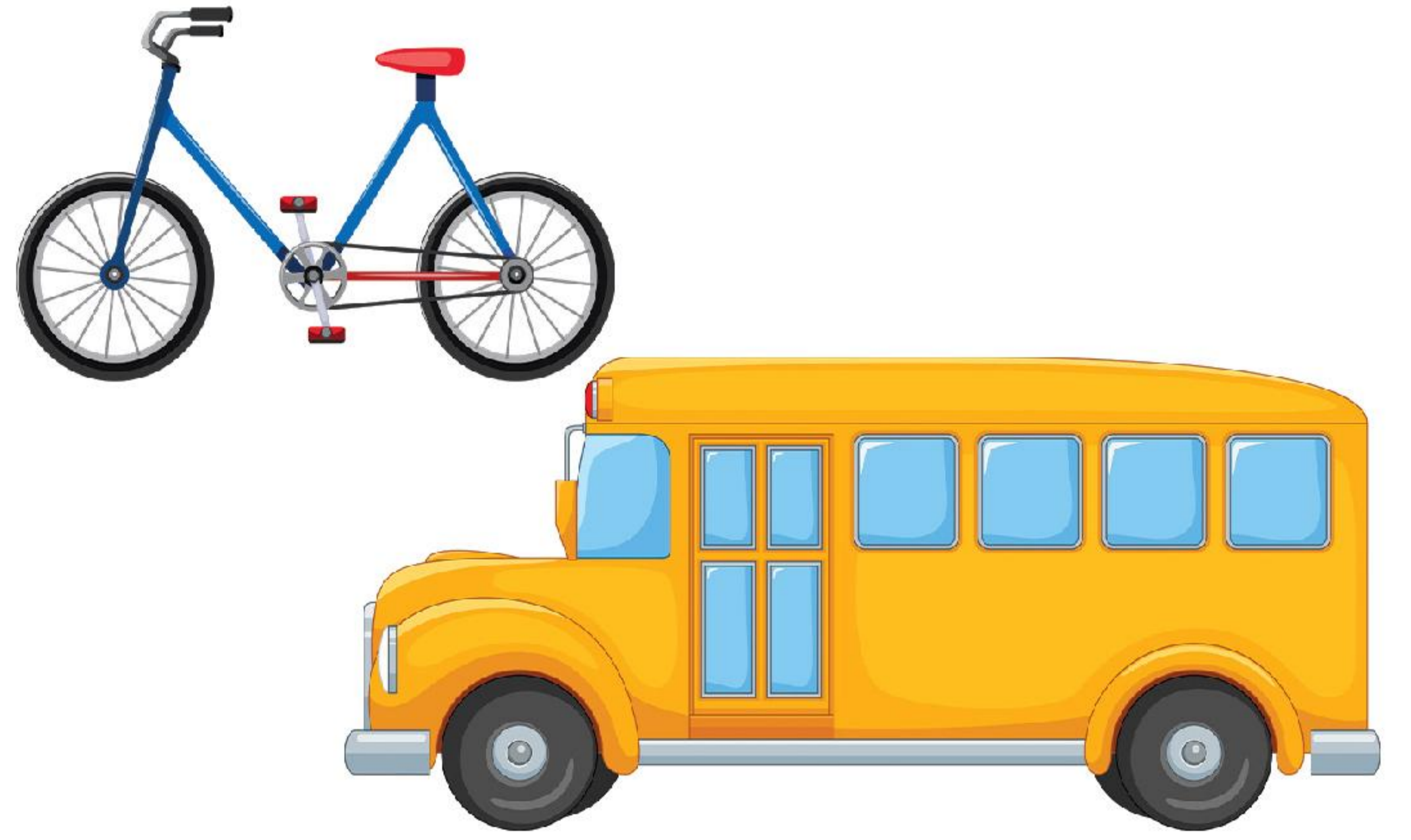
The tub is Light / Heavy

Write 'heavy' or 'light' in the blank



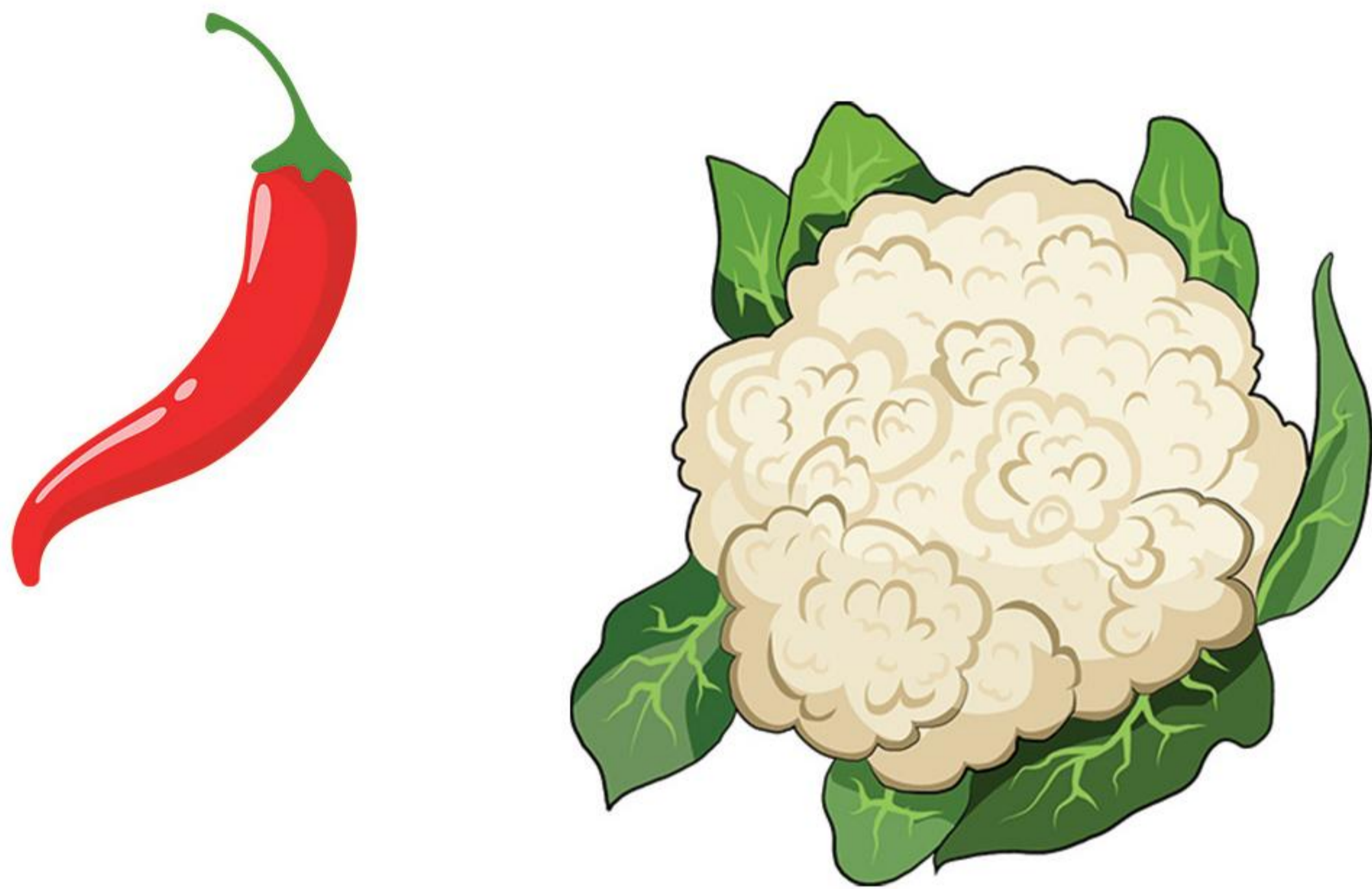
The ball is \_\_\_\_\_

The kite is \_\_\_\_\_



The bicycle is \_\_\_\_\_

The bus is \_\_\_\_\_



The chilli is \_\_\_\_\_

The cauliflower is \_\_\_\_\_



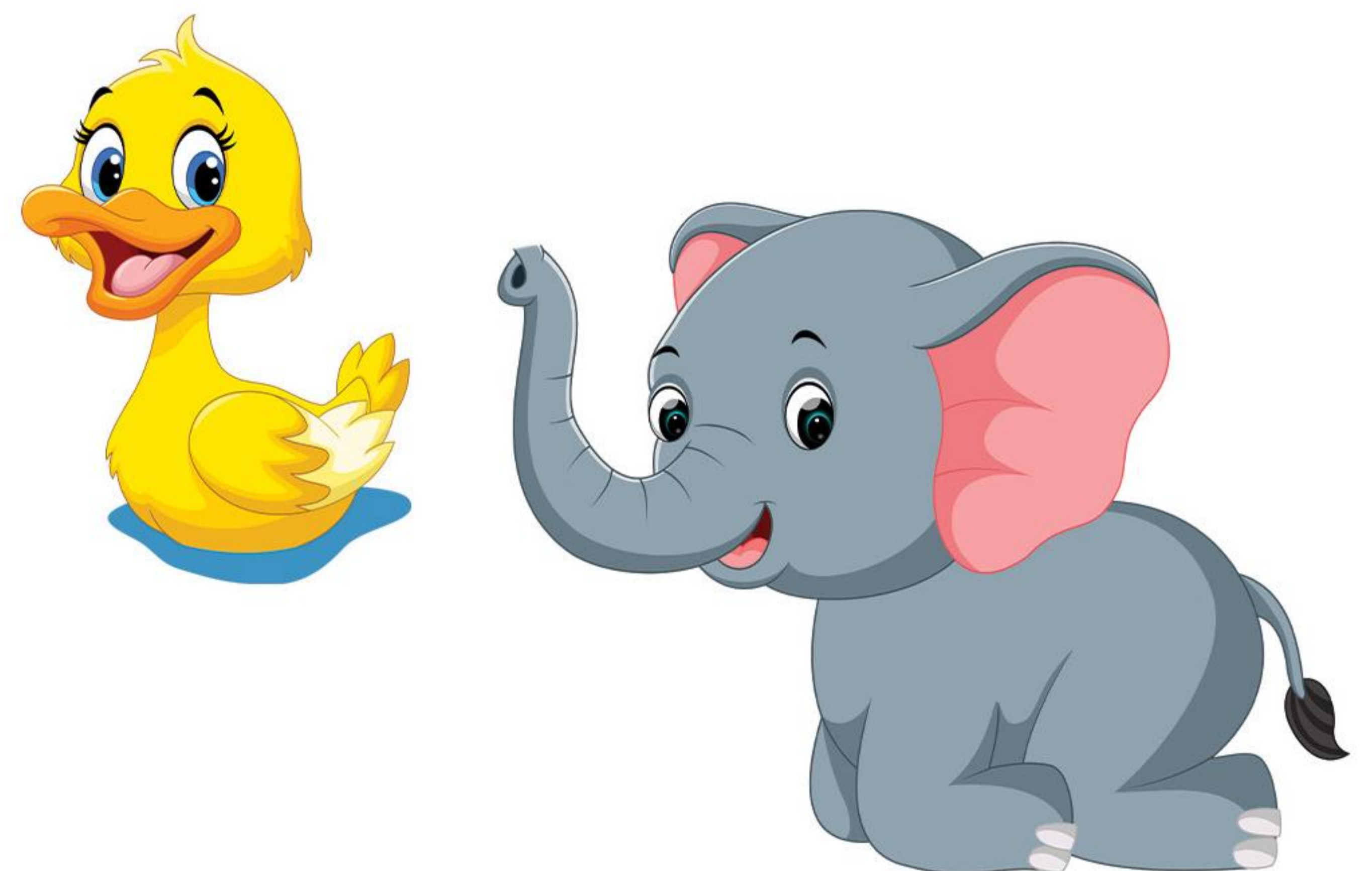
The cake is \_\_\_\_\_

The candy is \_\_\_\_\_



The pumpkin is \_\_\_\_\_

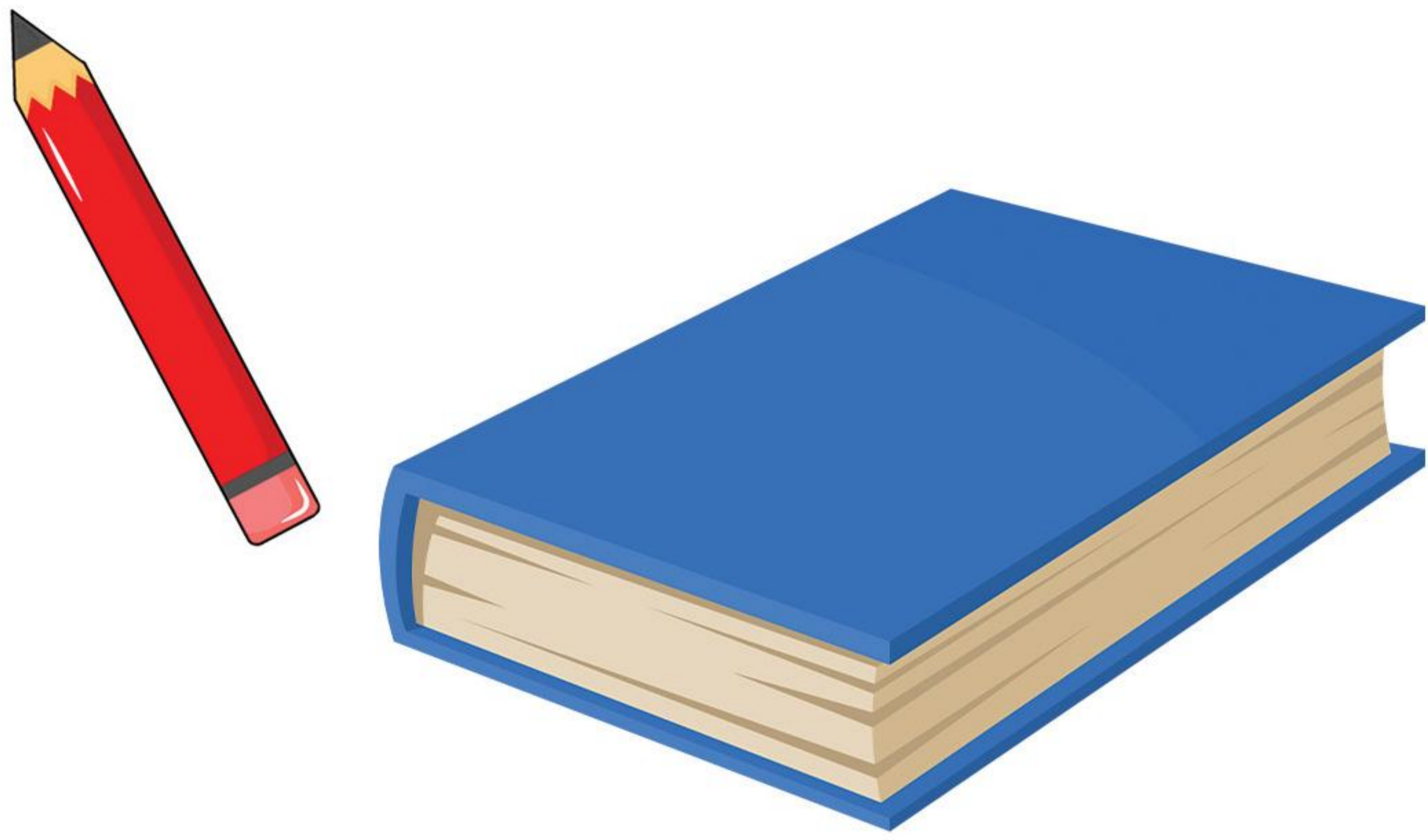
The apple is \_\_\_\_\_



The duck is \_\_\_\_\_

The elephant is \_\_\_\_\_

Write 'heavy' or 'light' in the blank



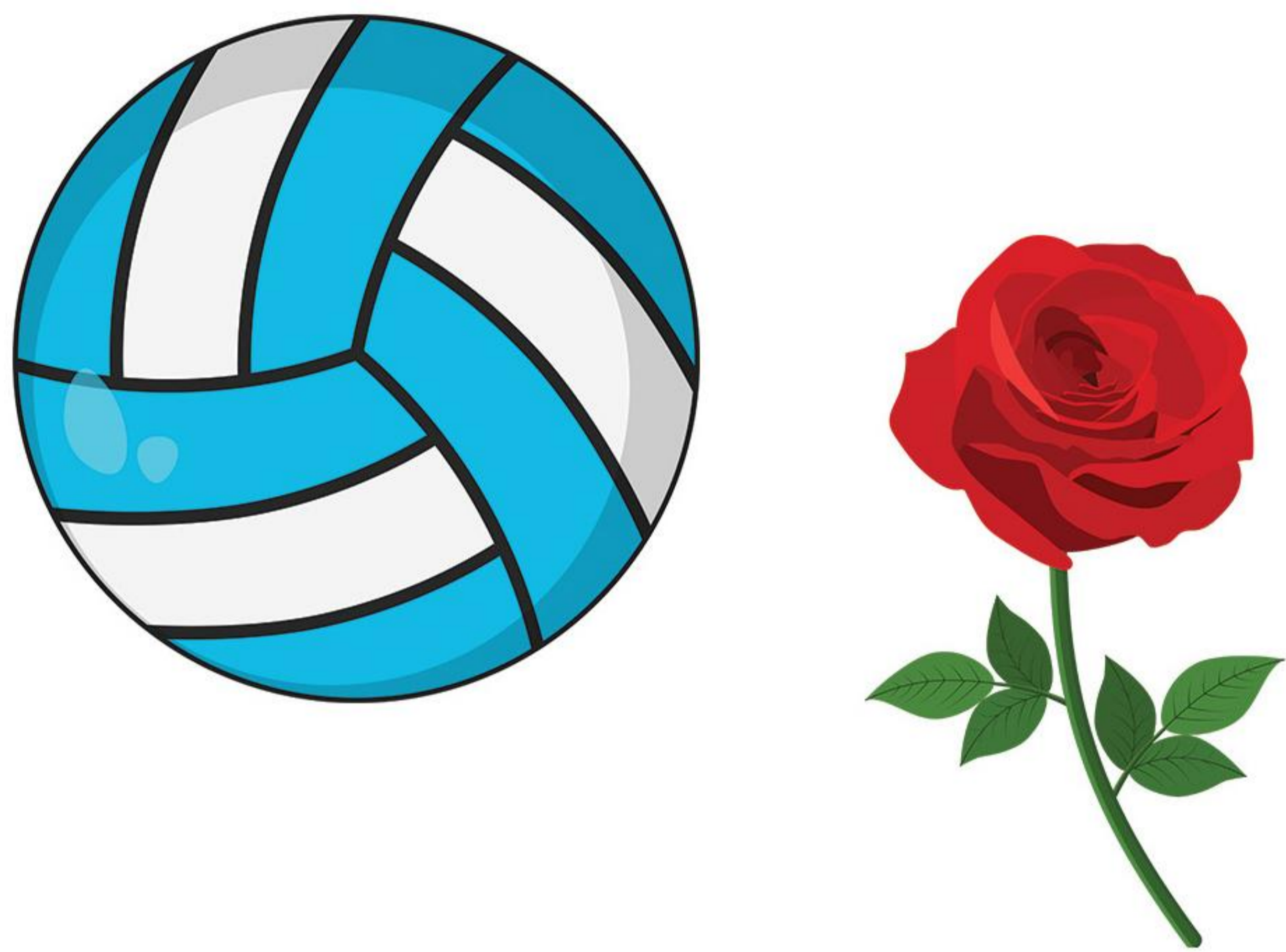
The pencil is \_\_\_\_\_

The book is \_\_\_\_\_



The bed is \_\_\_\_\_

The stool is \_\_\_\_\_



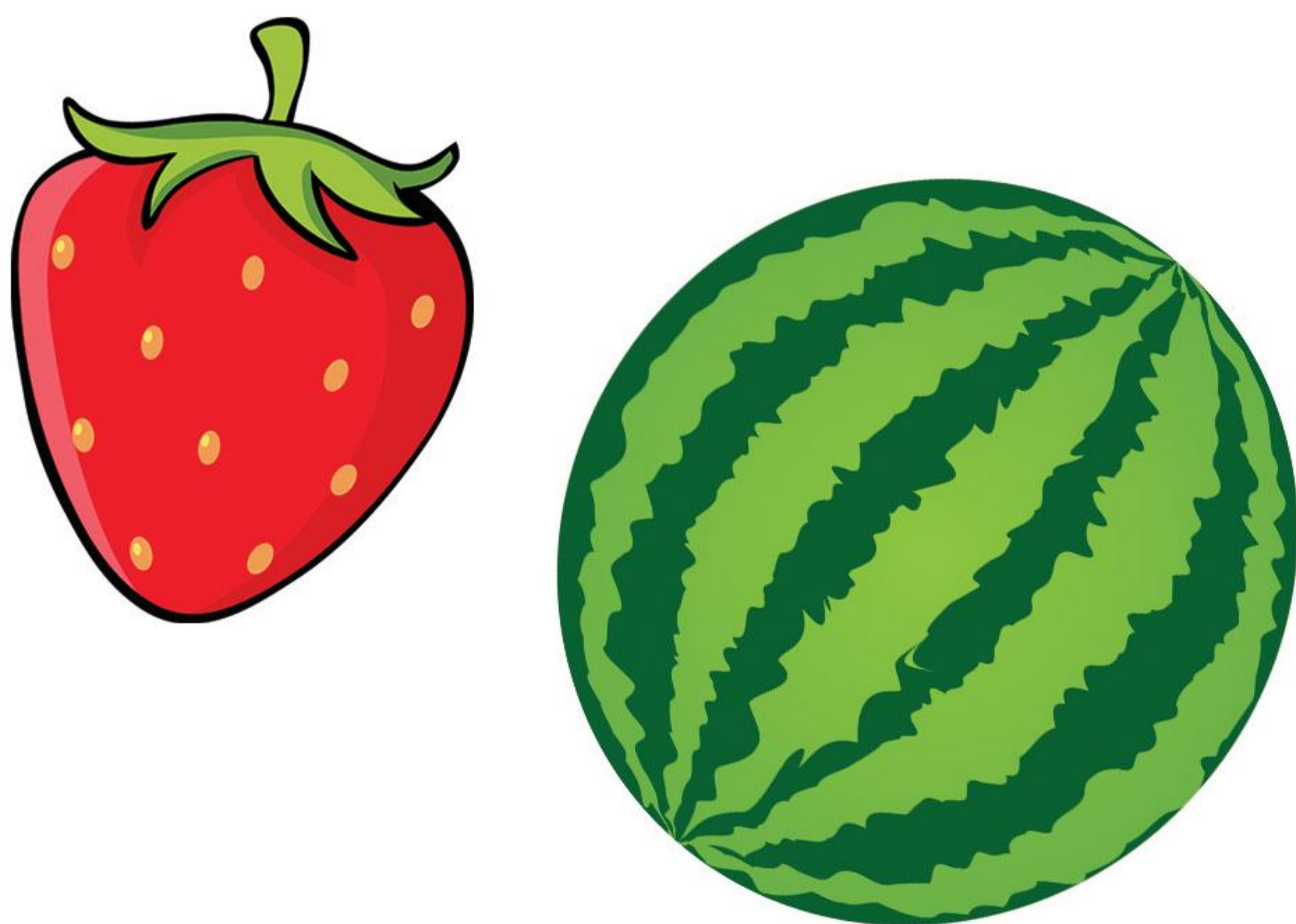
The ball is \_\_\_\_\_

The rose is \_\_\_\_\_



The bottle is \_\_\_\_\_

The rock is \_\_\_\_\_



The strawberry is \_\_\_\_\_

The watermelon is \_\_\_\_\_



The flag is \_\_\_\_\_

The log is \_\_\_\_\_

Write 'heavy' or 'light' in the blank



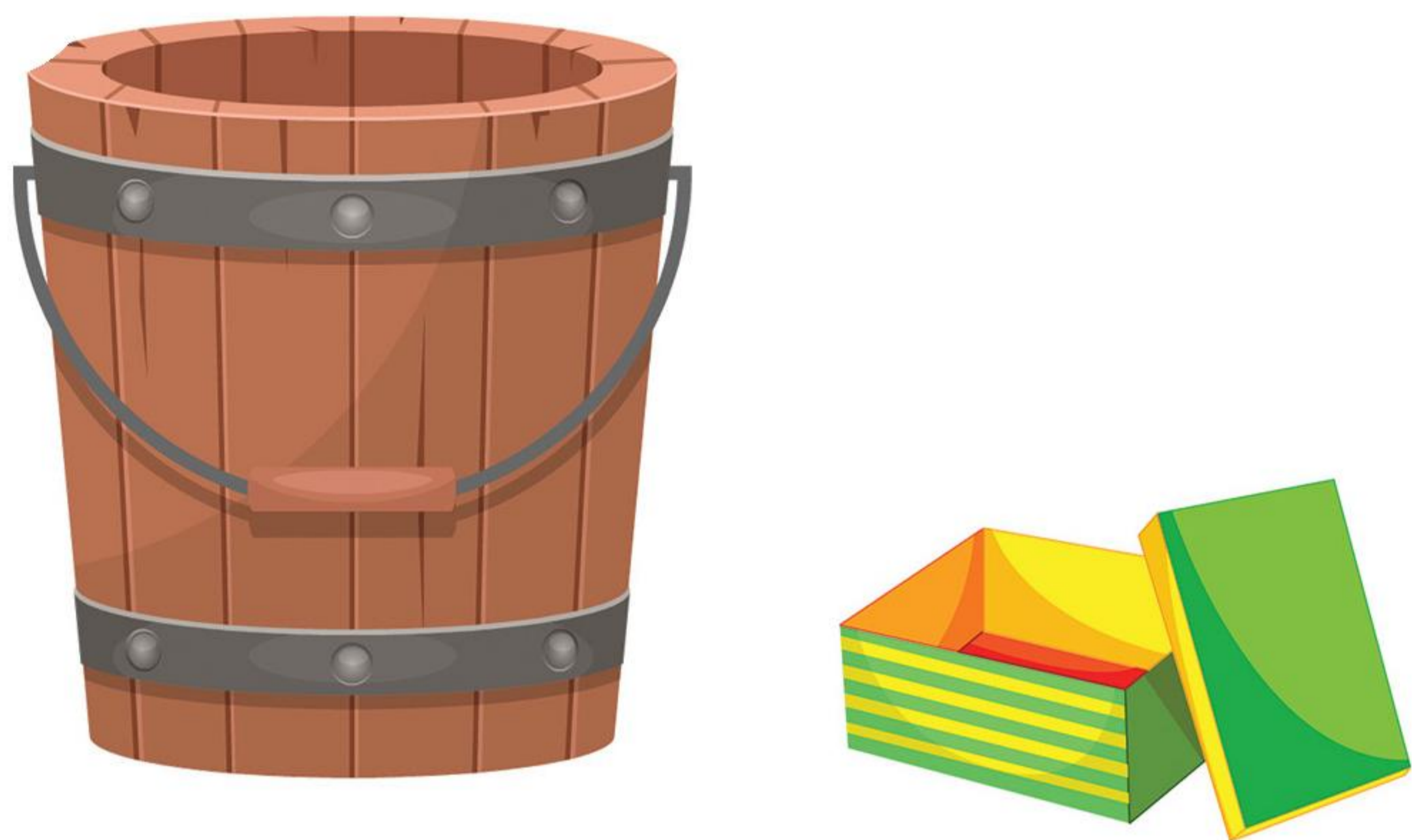
The towel is \_\_\_\_\_

The blanket is \_\_\_\_\_



The axe is \_\_\_\_\_

The toothbrush is \_\_\_\_\_



The bucket is \_\_\_\_\_

The box is \_\_\_\_\_



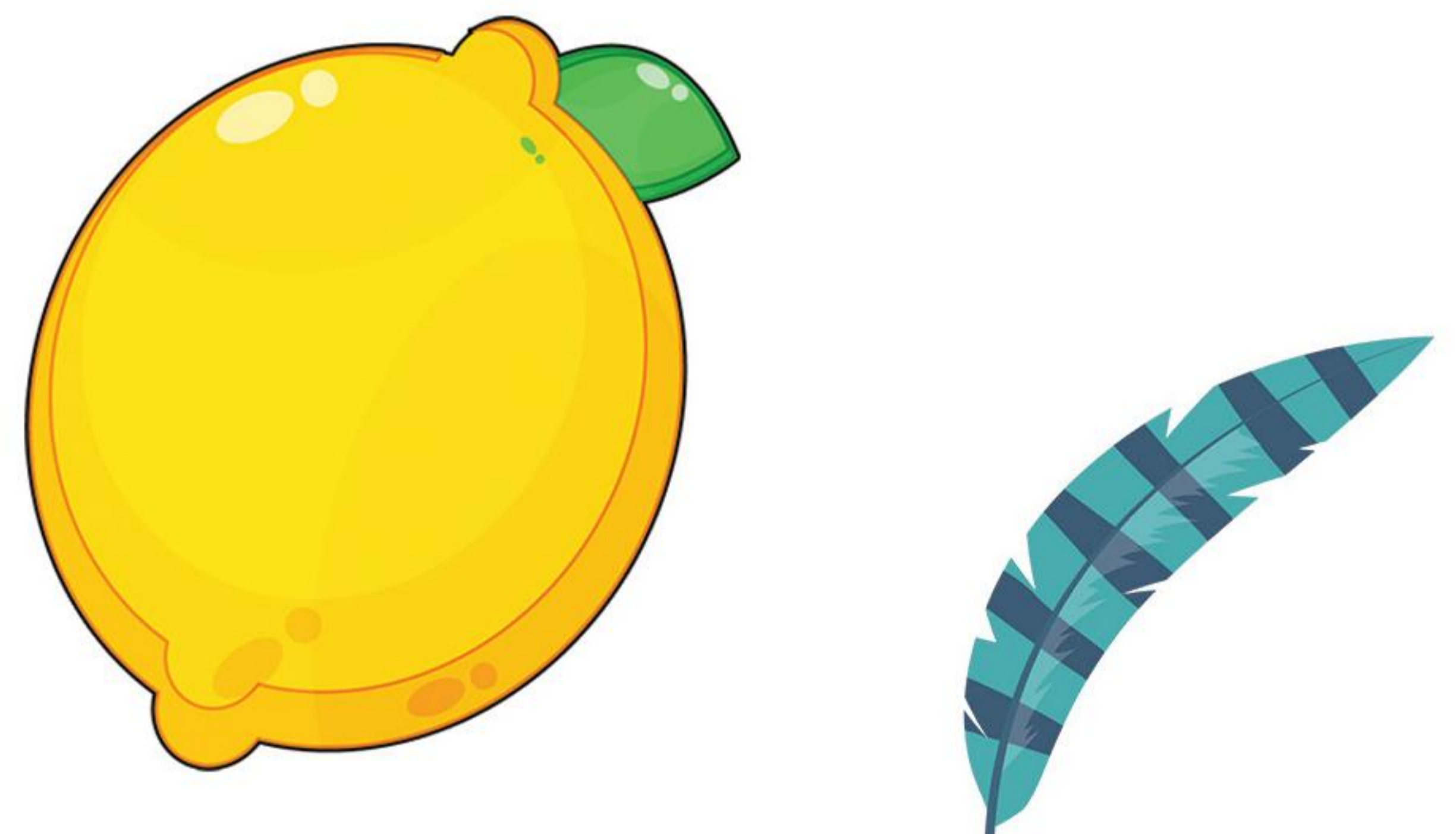
The shoe is \_\_\_\_\_

The button is \_\_\_\_\_



The glass is \_\_\_\_\_

The jar is \_\_\_\_\_



The lemon is \_\_\_\_\_

The feather is \_\_\_\_\_