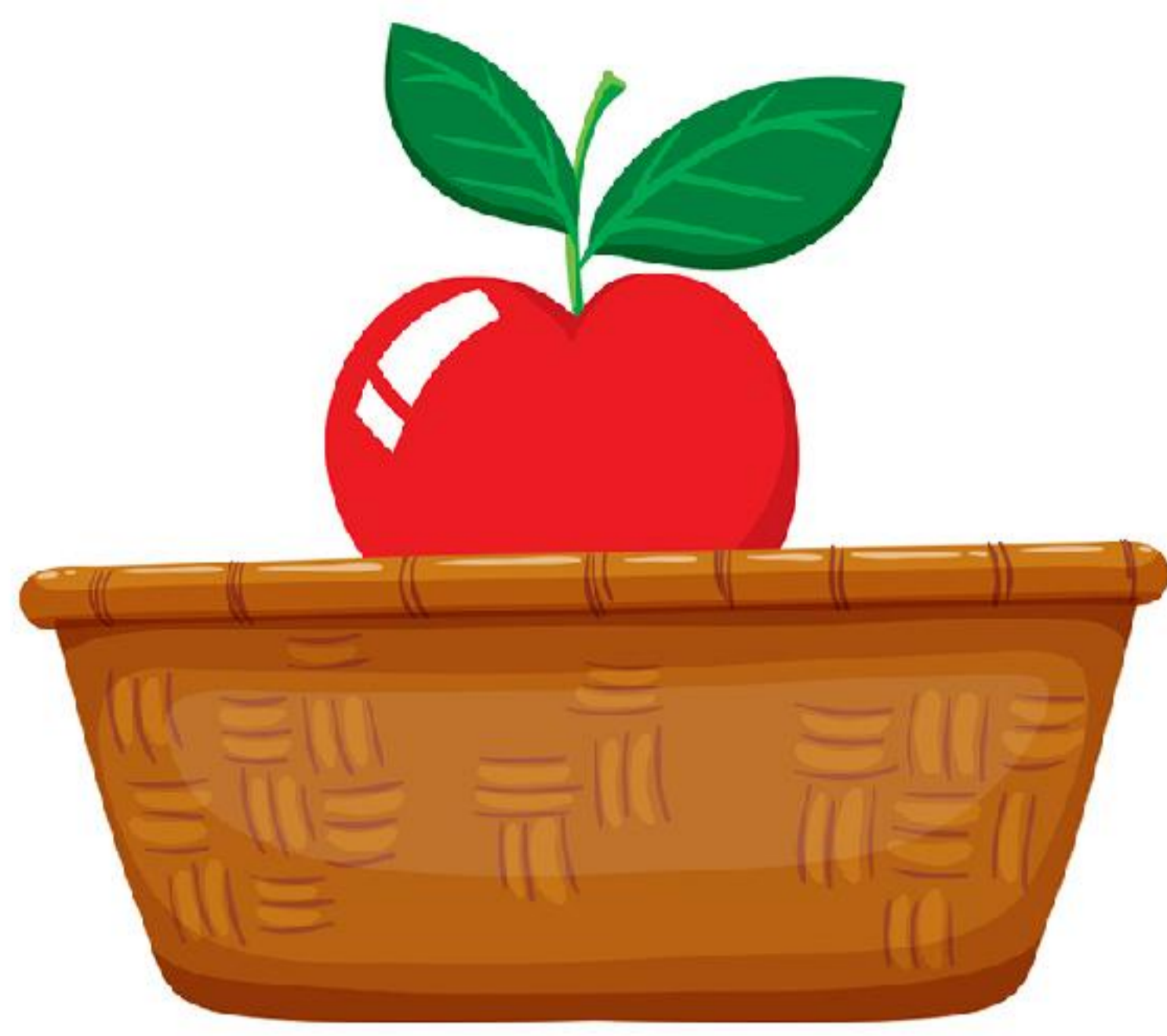
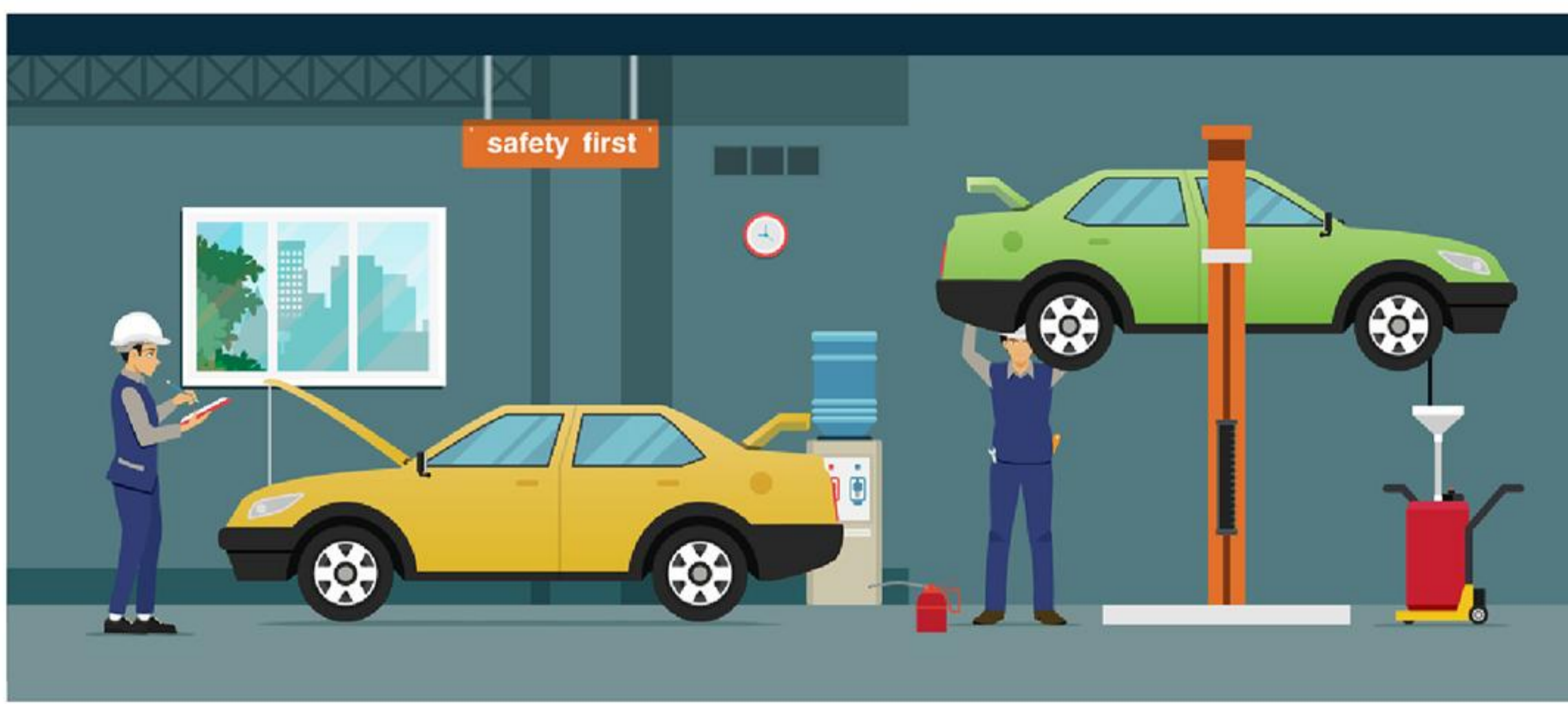


Write the correct sentence

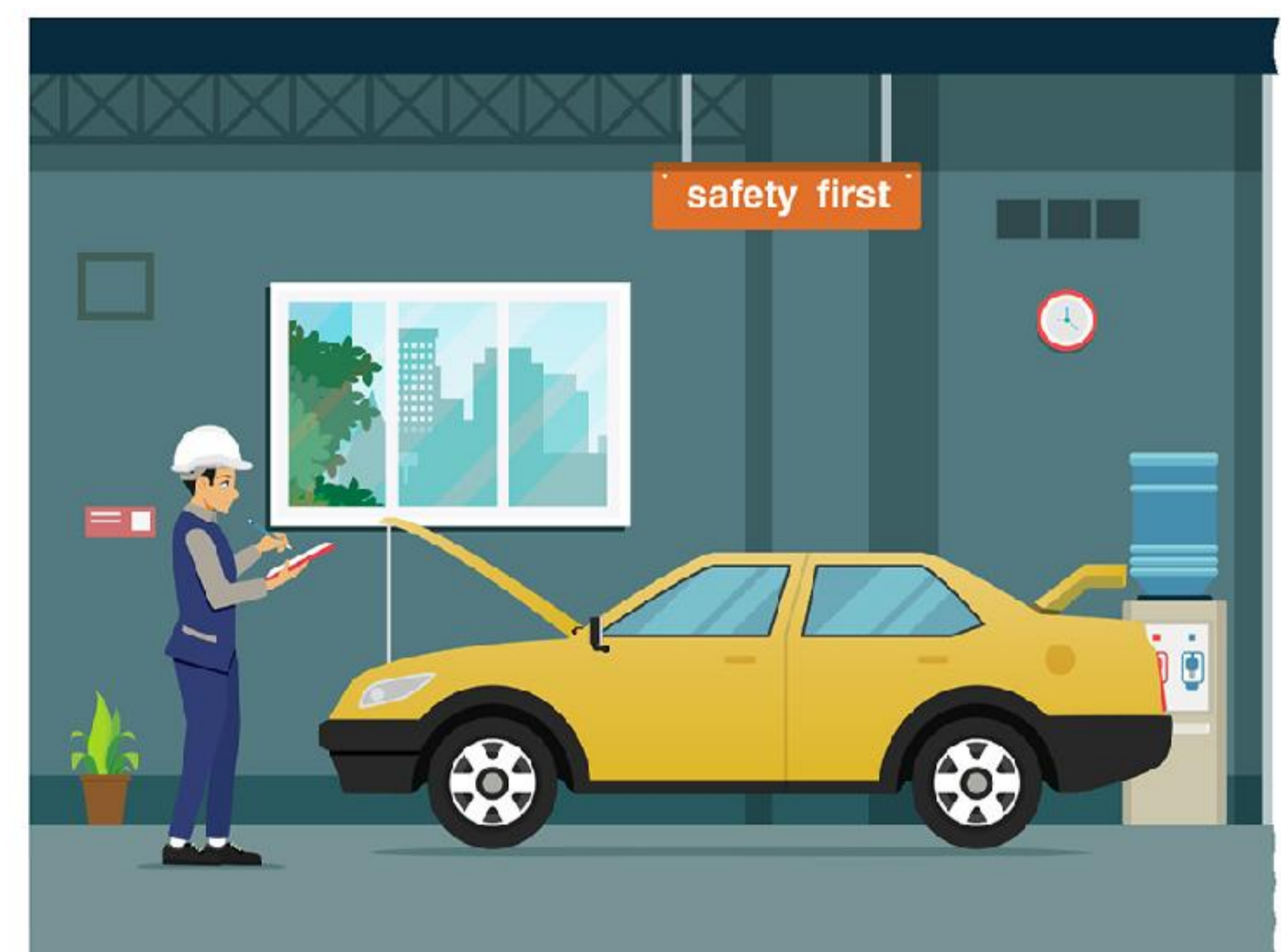












The apples **are** in the basket
The birds **are** in the cage
The car **is** in the garage

The bird **is** in the cage
The cars **are** in the garage
The apple **is** in the basket

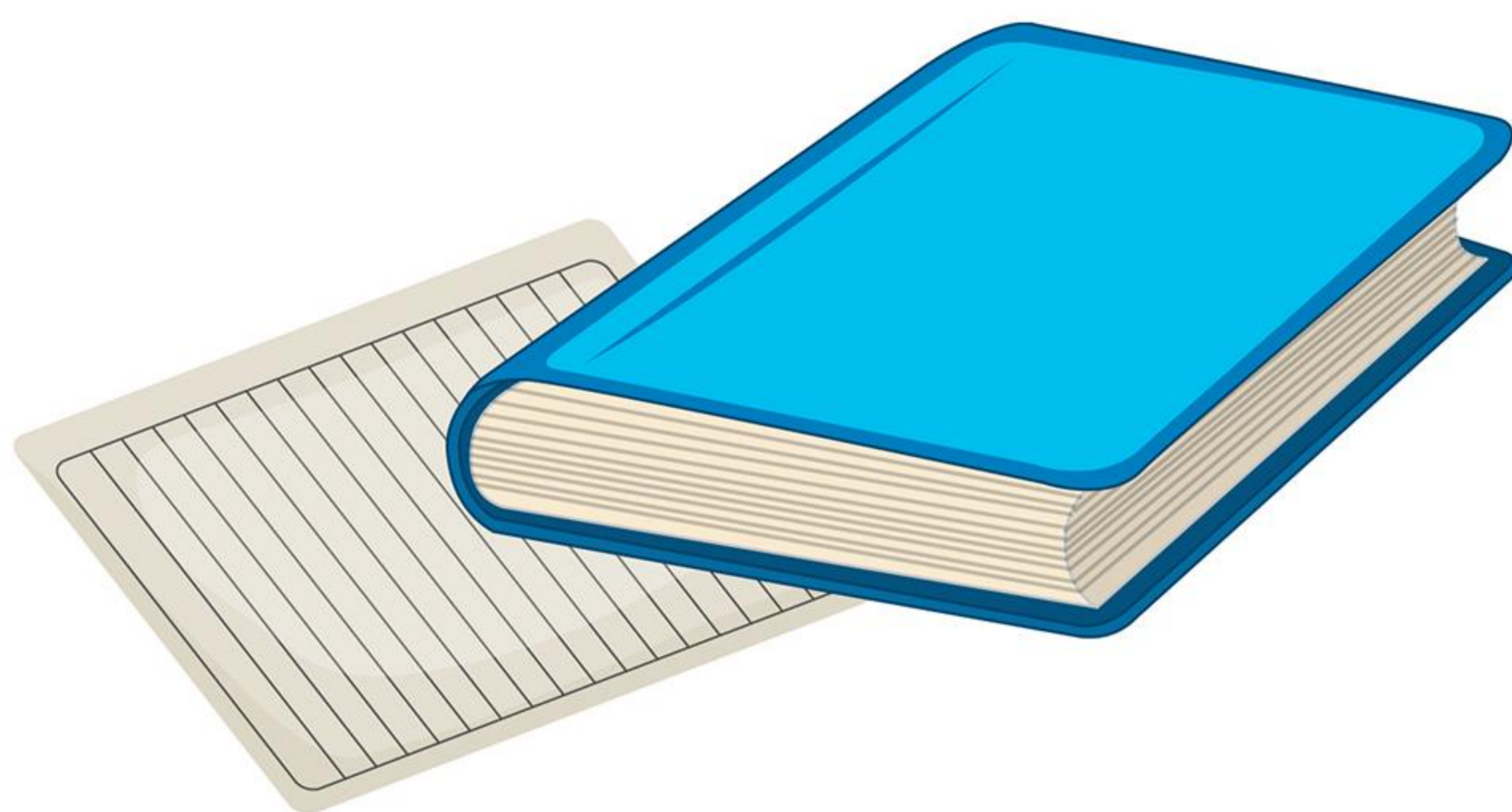
Write the correct sentence













The papers **are** under the book

The gifts **are** under the christmas tree

The baskets **are** under the table

The gift **is** under the christmas tree

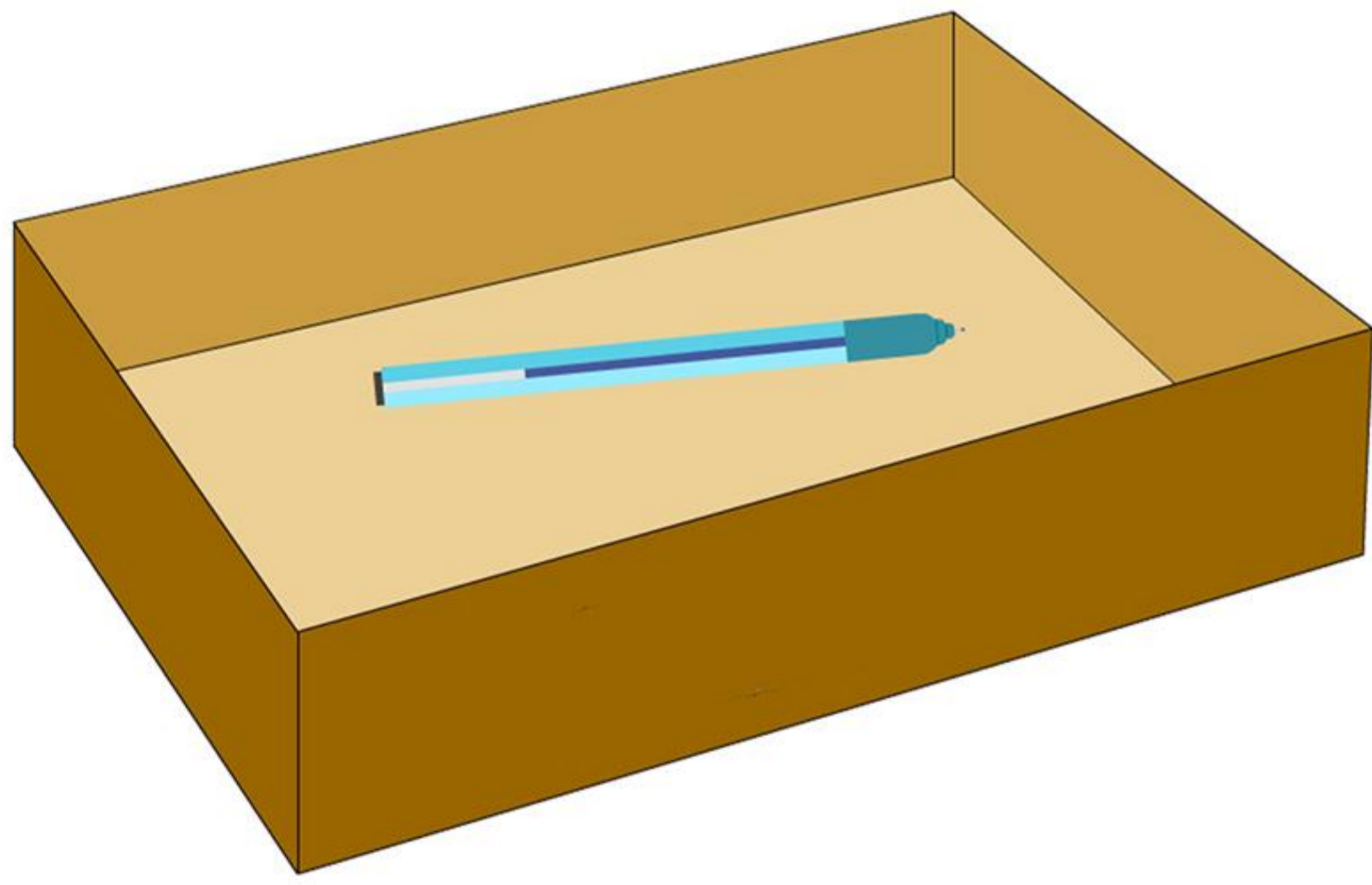
The basket **is** under the table

The paper **is** under the book

Write the correct sentence

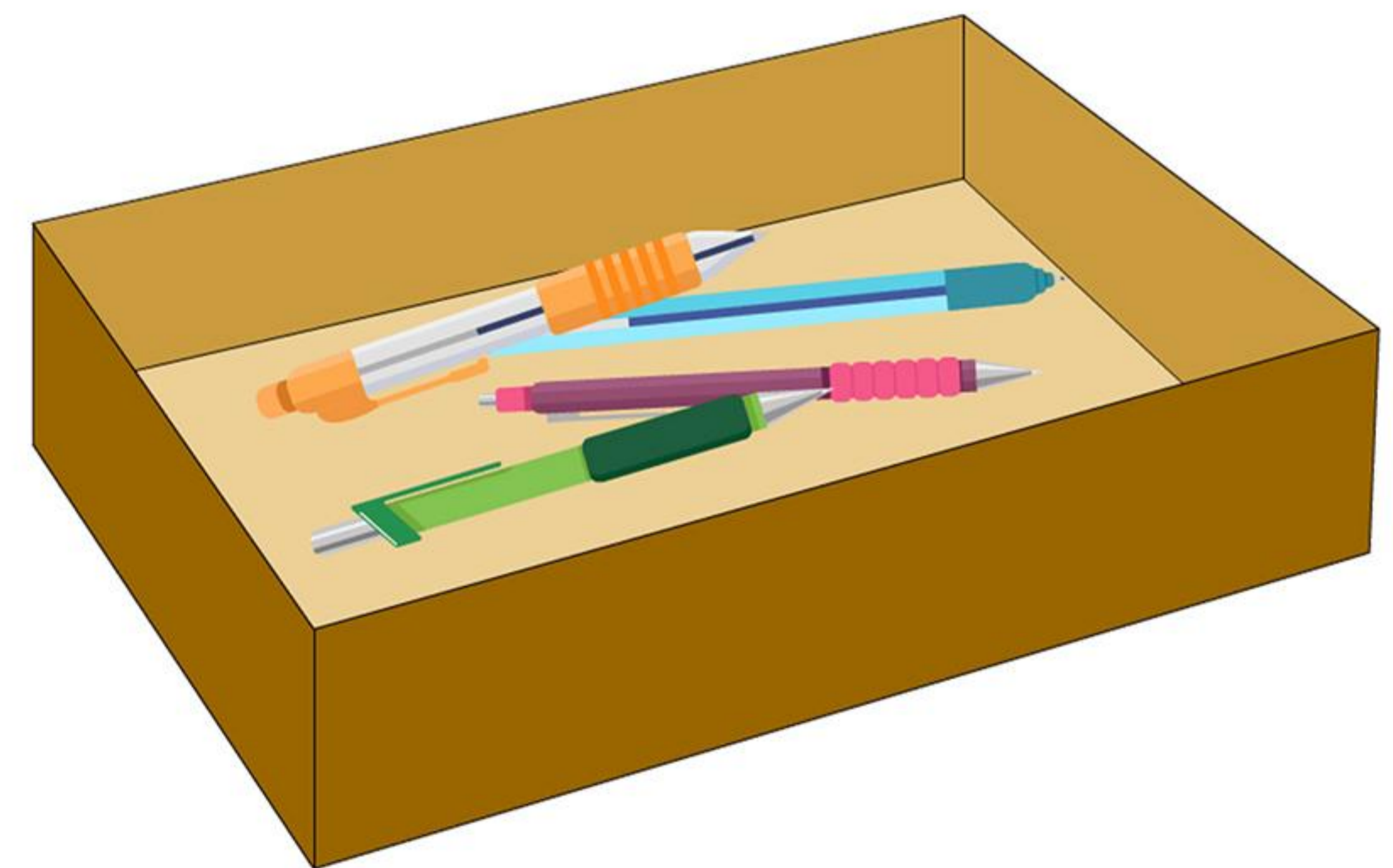












The pens **are** in the box
The books **are** in the bag
The coin **is** in the jar

The book **is** in the bag
The coins **are** in the jar
The pen **is** in the box

Write the correct sentence













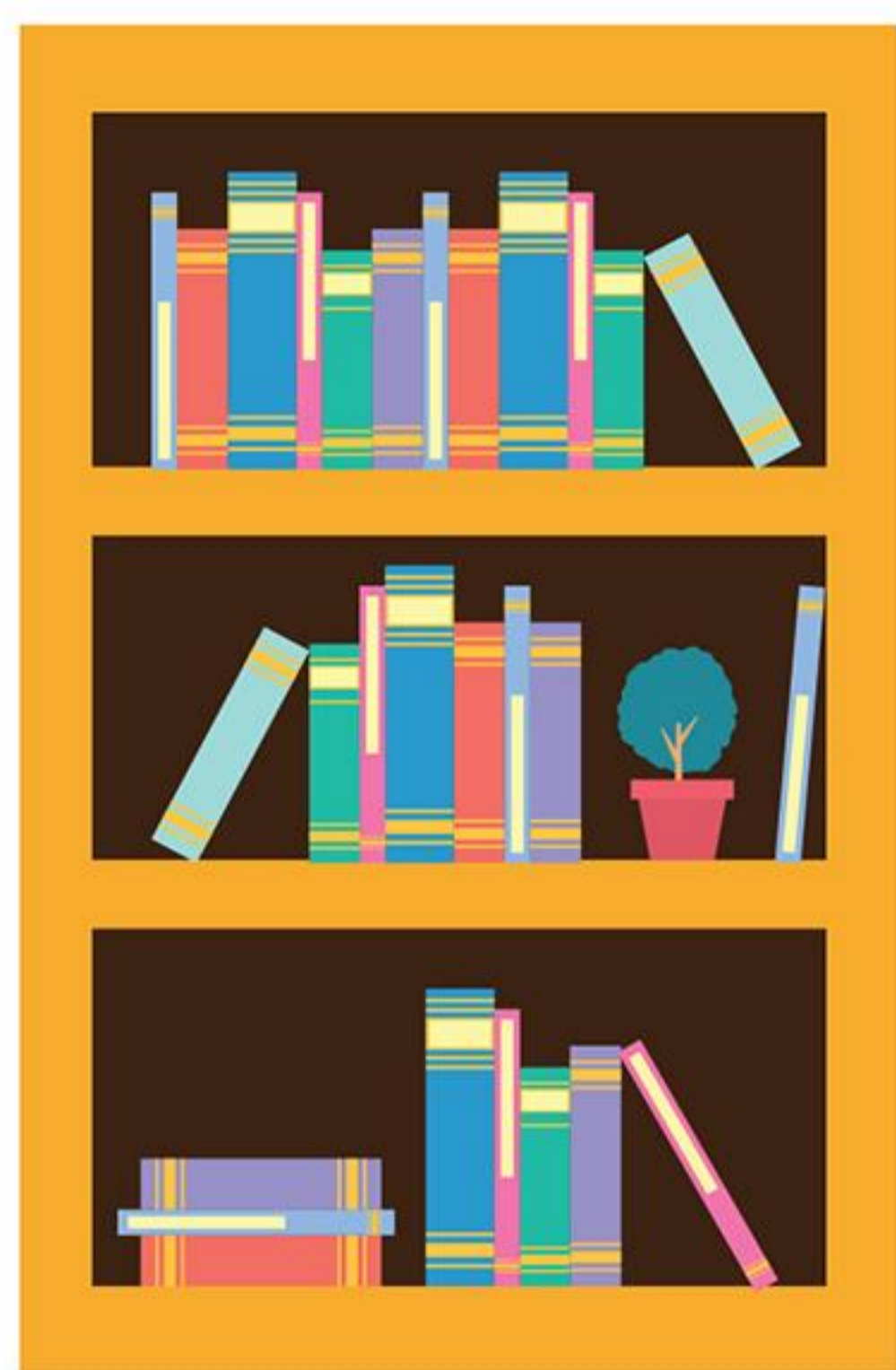
The shoes **are** in the box
The tools **are** in the box
The sock **is** in the laundry

The tool **is** in the box
The socks **are** in the laundry
The shoe **is** in the box

Write the correct sentence

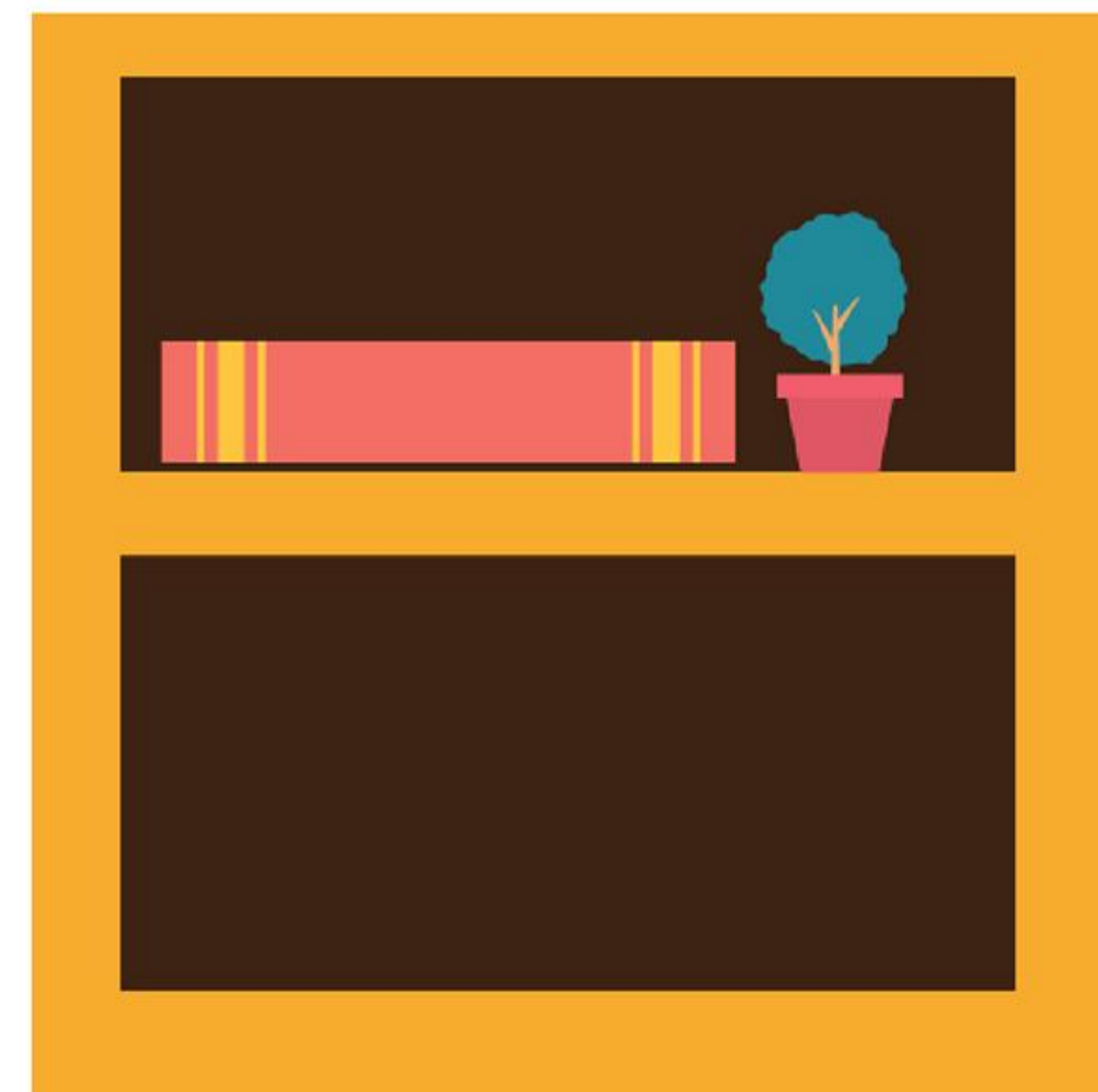












The plants **are** in the pot
The books **are** on the shelf
The cup **is** on the table

The book **is** on the shelf
The cups **are** on the table
The plant **is** in the pot

Write the correct sentence











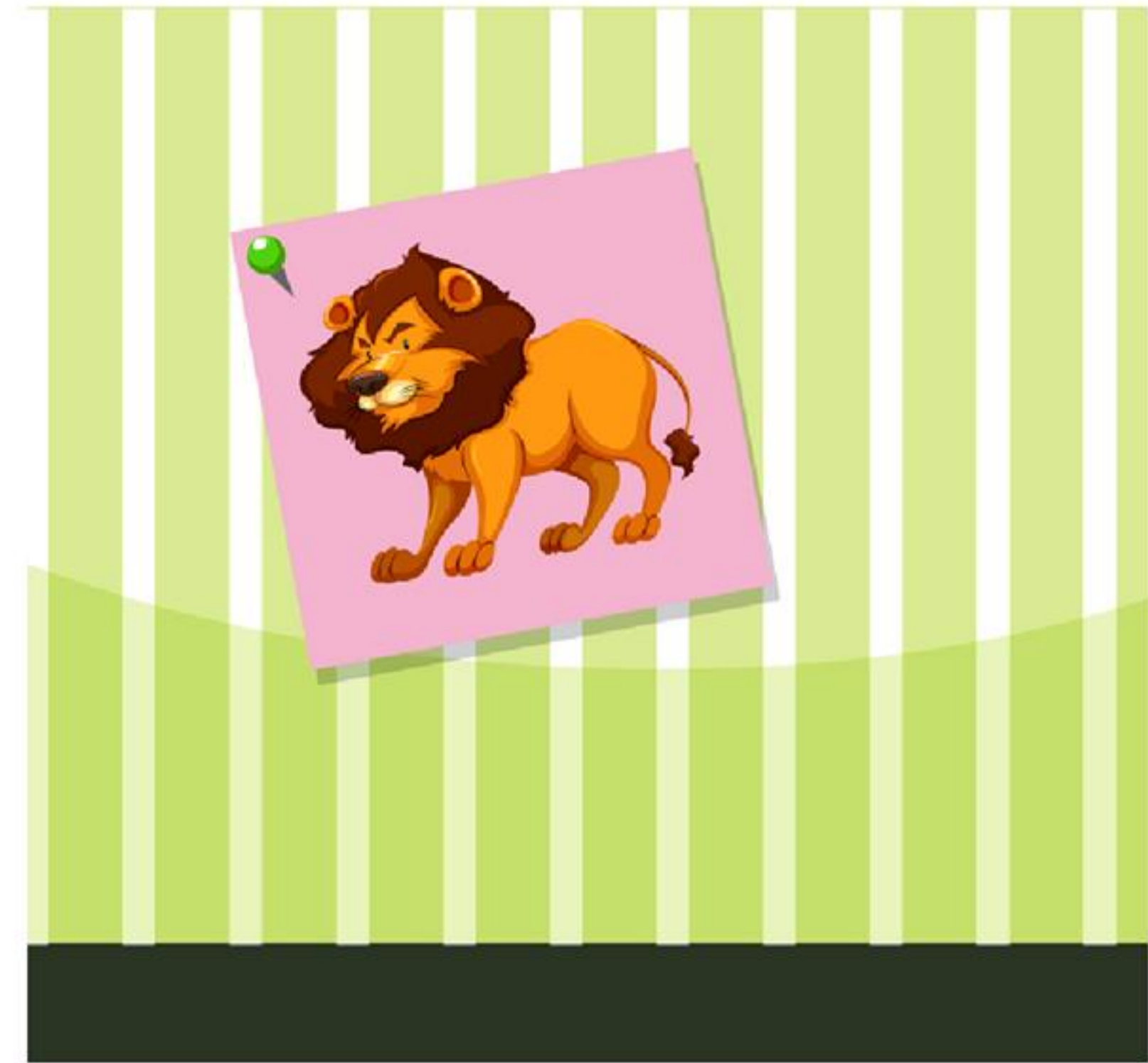


The towels **are** on the rack
The cats **are** on the mat
The computer **is** on the table

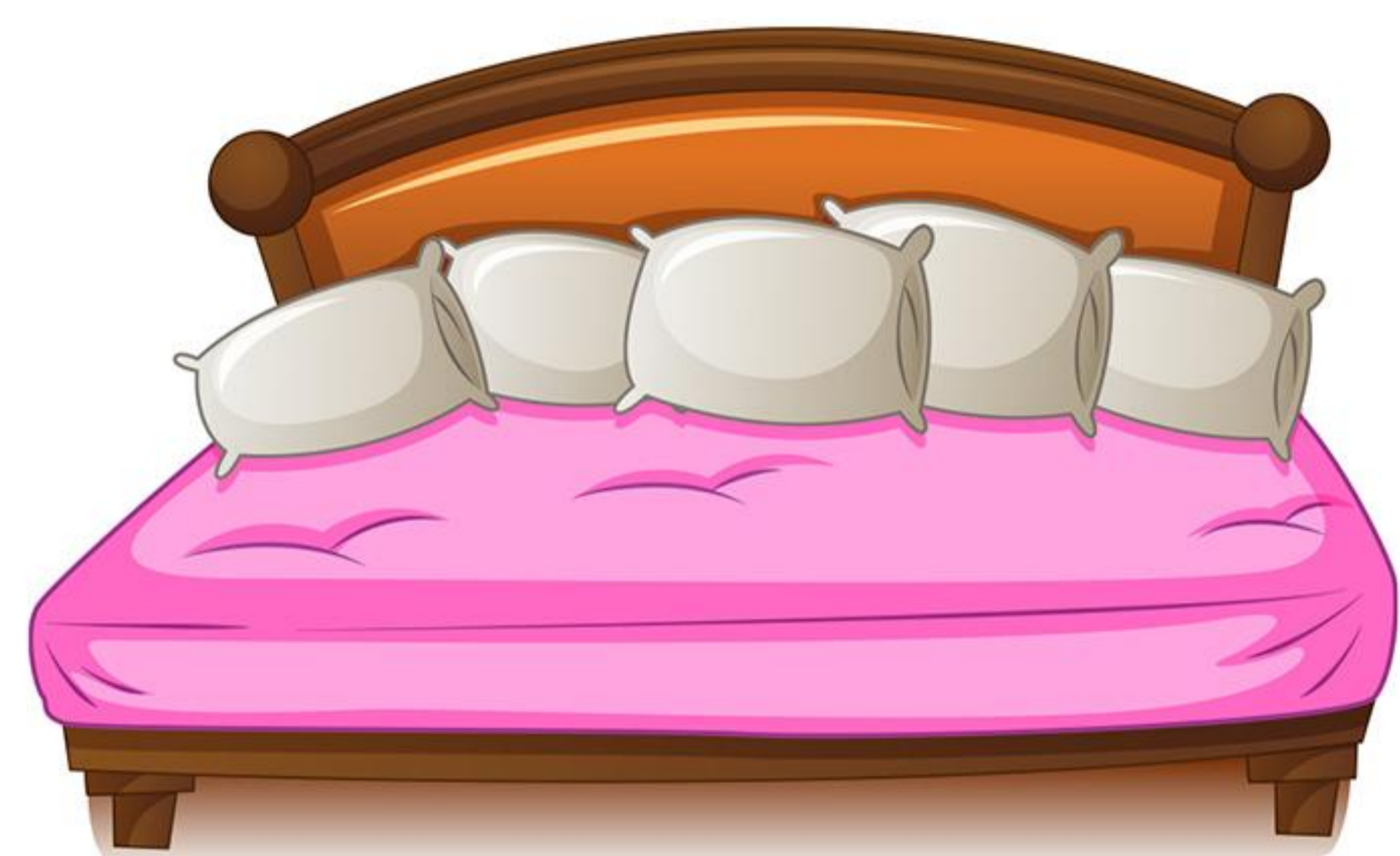
The cat **is** on the mat
The computers **are** on the table
The towel **is** on the rack

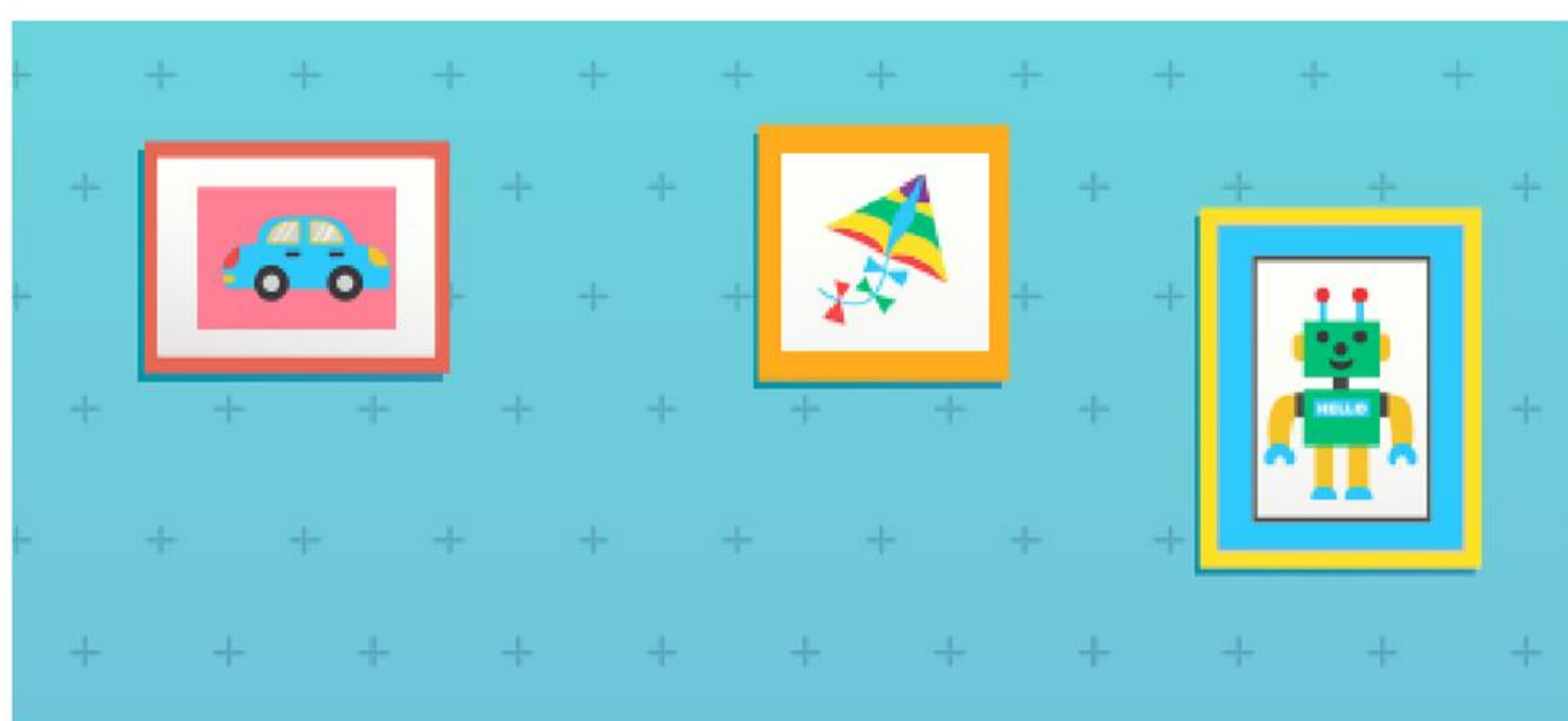
Write the correct sentence

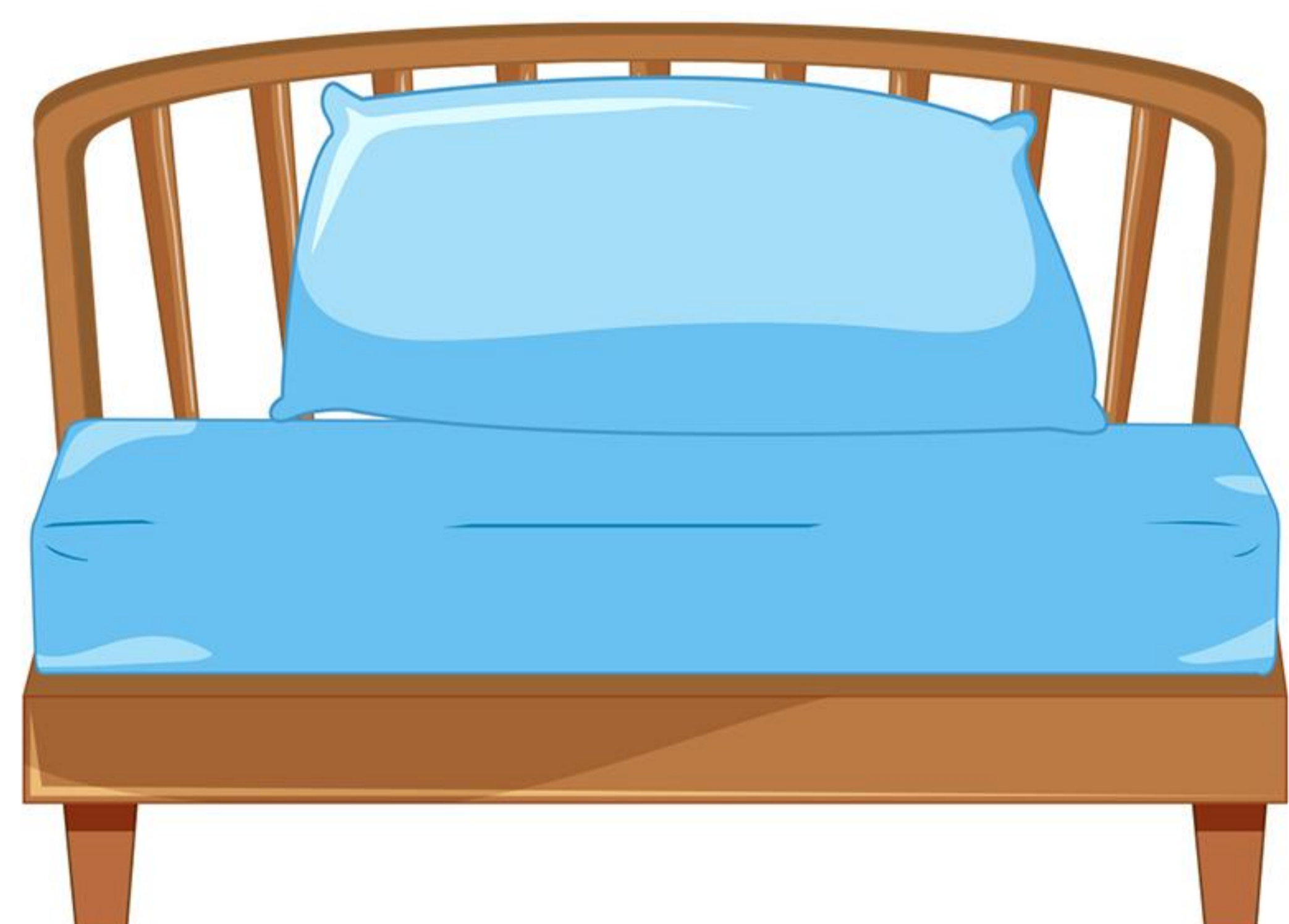








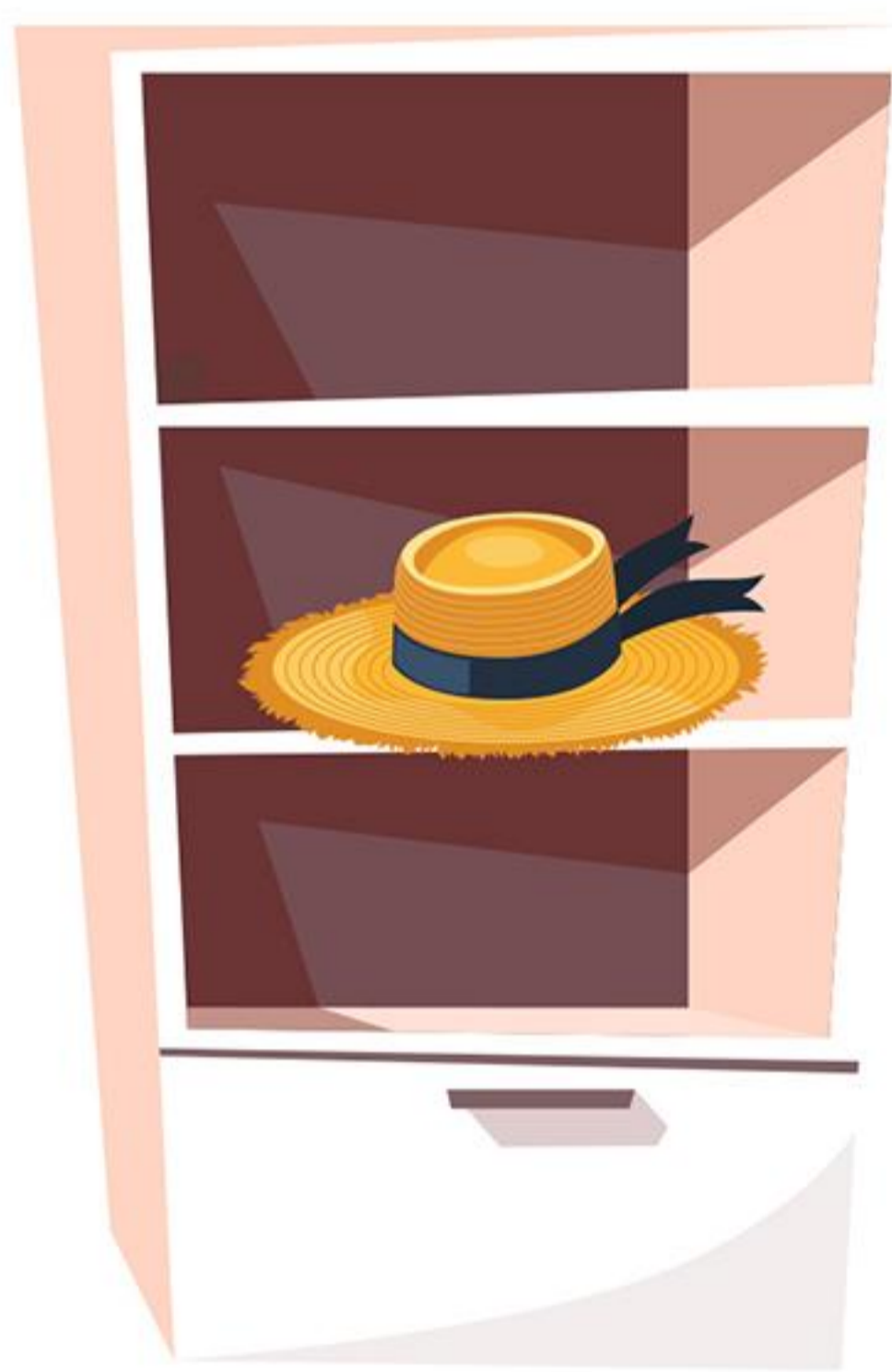
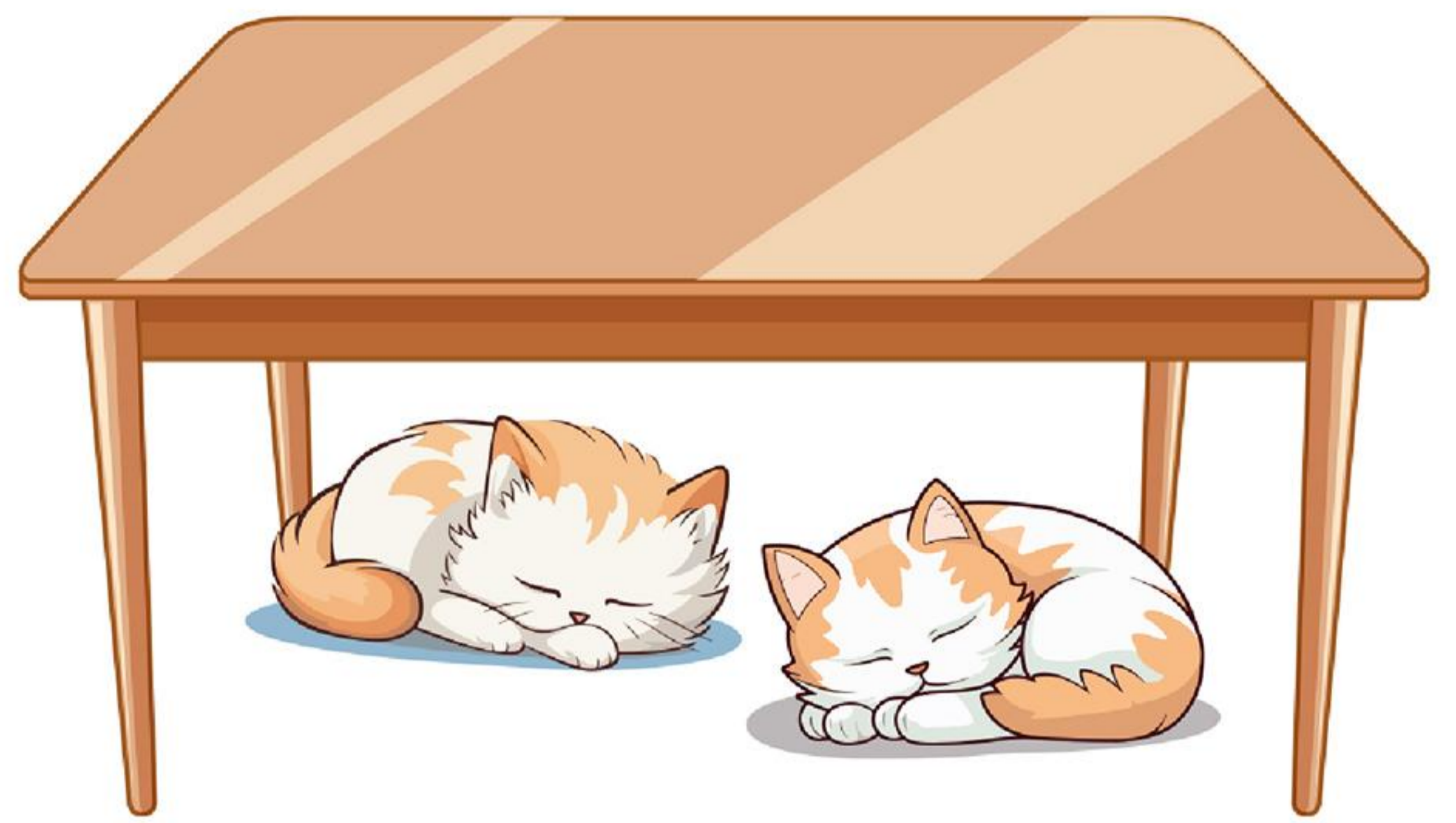




The pictures **are** on the wall
The vases **are** on the window
The pillow **is** on the bed

The vase **is** on the window
The pillows **are** on the bed
The picture **is** on the wall

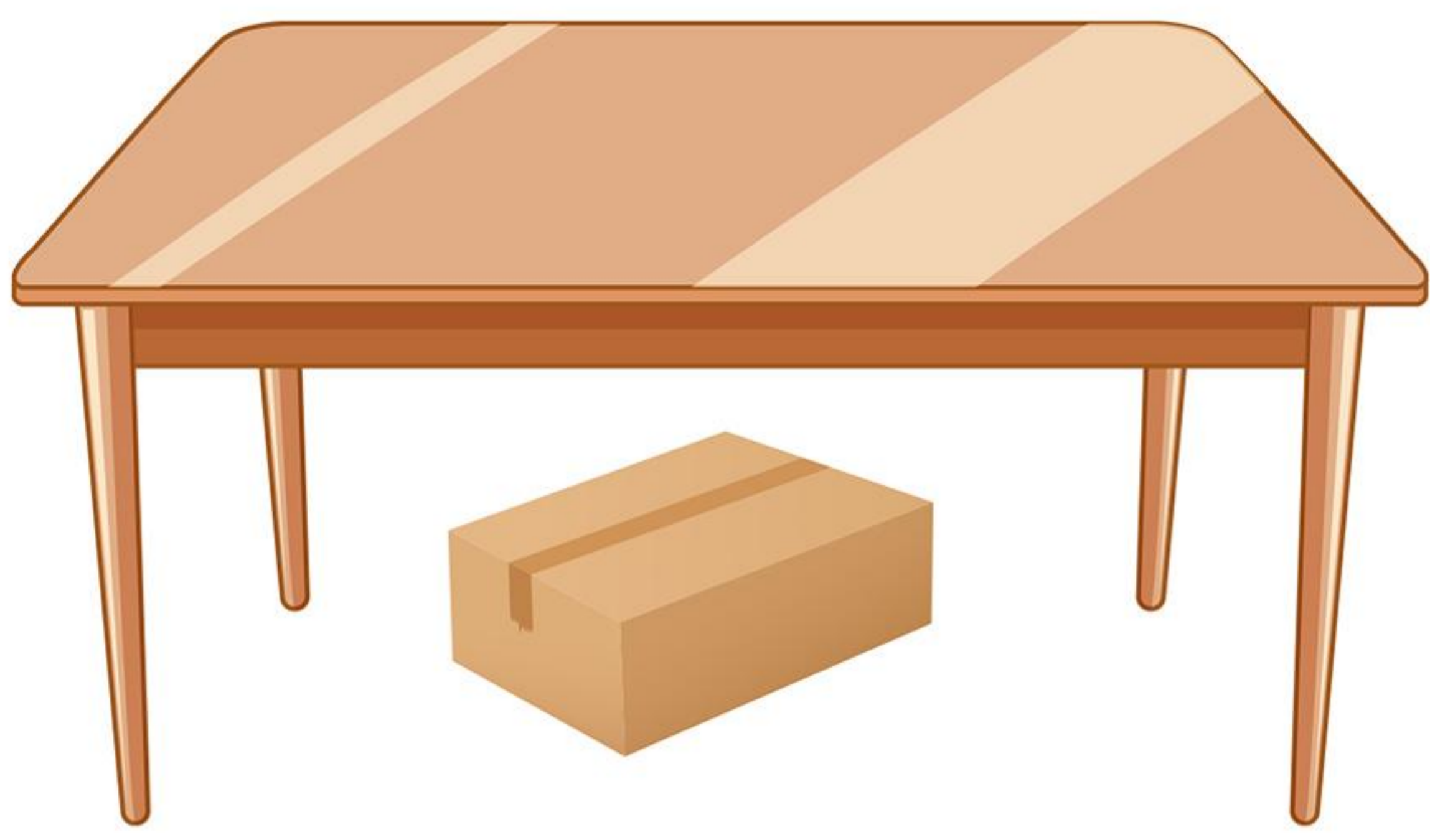
Write the correct sentence



The hats **are** on the shelf
The cats **are** under the table
The lamp **is** on the table

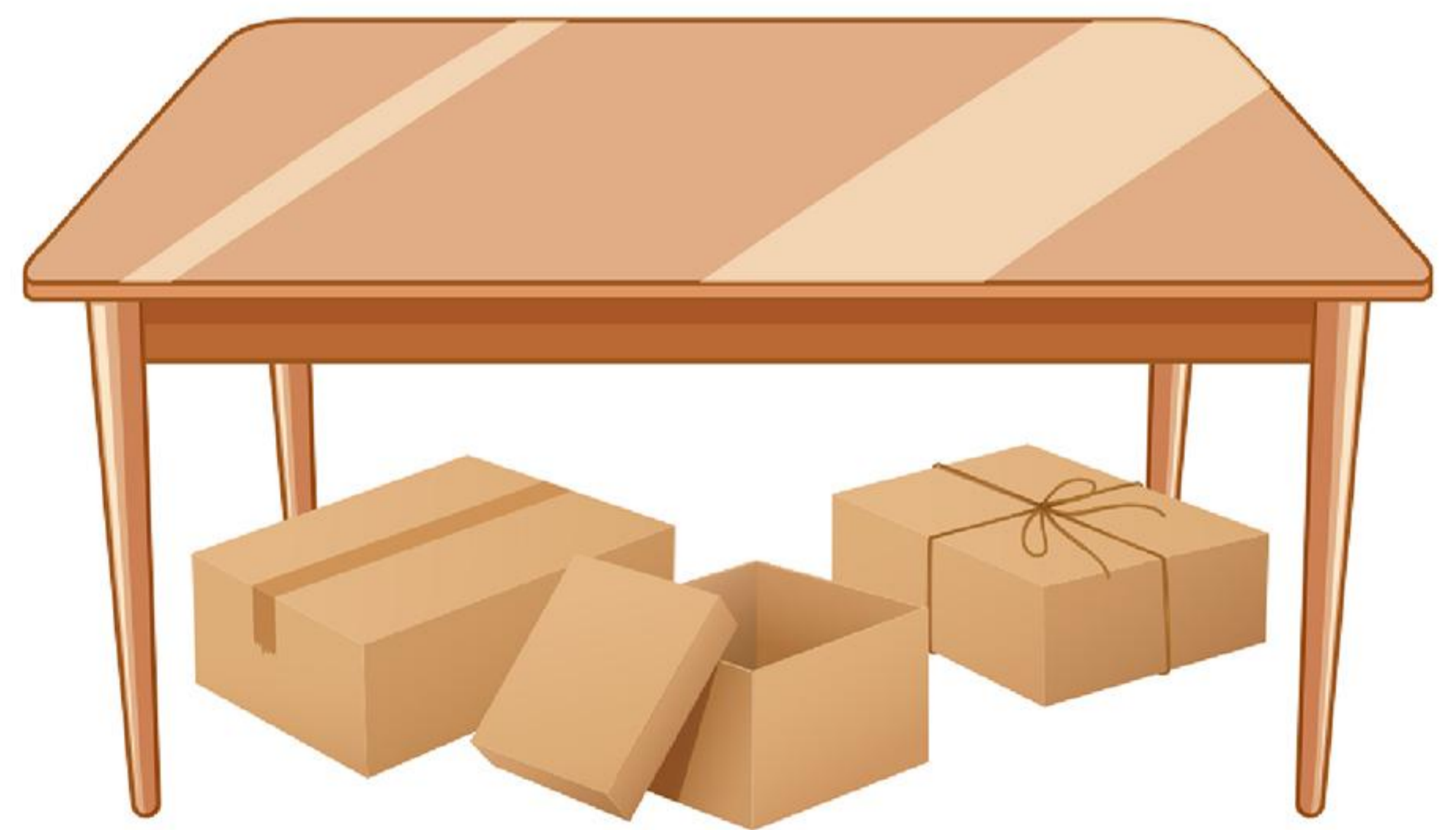
The cat **is** under the table
The lamps **are** on the table
The hat **is** on the shelf

Write the correct sentence













The rugs **are** under the table
The boxes **are** under the table
The shoe **is** under the bed

The box **is** under the table
The shoes **are** under the bed
The rug **is** under the table

Write the correct sentence













The toys **are** under the sofa
The socks **are** under the bed
The dog **is** under the tree

The dogs **are** under the tree
The sock **is** under the bed
The toy **is** under the sofa